

## Article Template for the EVS24 Symposium

Author1<sup>1</sup>, Author2<sup>2</sup>

<sup>1</sup>*Author1 (corresponding author) affiliation, address, email*

<sup>2</sup>*State affiliation of other authors if different*

---

### Abstract

Insert abstract text here in 10,5pt Times. The text of the abstract is justified and runs the full width of the two columns, with 1½ line spacing. The abstract should contain between 200 and 300 words. The abstract and keyword section shall be enclosed within two horizontal lines 1pt thick.

*Keywords: list 3-5 keywords from the provided keyword list in 9,5pt italic (L<sup>A</sup>T<sub>E</sub>X: "small"), separated by commas*

---

## 1 Introduction

This is the template for EVS24 conference papers. It is provided as a .tex file for L<sup>A</sup>T<sub>E</sub>X users, as well as for common word processor programs. The body of the text is Times 10,5pt justified (L<sup>A</sup>T<sub>E</sub>X: 11pt in documentclass declaration). Sections are numbered sequentially. Headings are 14pt bold (automatically set in L<sup>A</sup>T<sub>E</sub>X); headings for Nomenclature, Acknowledgements, References and Authors are not numbered.

### 1.1 Subsections

Sub-headings are numbered as above. Subsections are numbered sequentially. Headings are 12pt bold. (automatically set in L<sup>A</sup>T<sub>E</sub>X)

#### 1.1.1 Sub-subsections

Sub-subheading, if any, are also numbered as above. Sub-subsections are numbered sequentially. Headings are 10,5pt bold (automatically set in L<sup>A</sup>T<sub>E</sub>X).

### 1.2 Title section

Conference designation shall be set in 16 pt Times italic (L<sup>A</sup>T<sub>E</sub>X: "Large"). Title shall be set in 18 pt Times bold (L<sup>A</sup>T<sub>E</sub>X: "LARGE"). Author names in 12 pt (L<sup>A</sup>T<sub>E</sub>X: "large"); affiliations (one affiliation per line, stating institution, address and email) in 9,5pt Times italic (L<sup>A</sup>T<sub>E</sub>X: "small"). L<sup>A</sup>T<sub>E</sub>X users: please provide title, authors, abstracts and keywords in the appropriate sections.

For other programs, please follow the instructions in the abstract section.

## 2 File requirements

The paper shall be uploaded as a pdf file only, made up to the specifications of this template. In the case special fonts (e.g. symbols) are used, these shall be embedded in the pdf file. The size of the file should not exceed 1,5MB for a total allowed paper length of 12 pages.

## 3 Page and Column Dimensions

The printed page area and column dimensions are set as follows:

- top and bottom margins 30 mm
- left and right margin 25 mm
- two-column layout with column space of 10 mm

A footer is to be provided, with a horizontal line 1 pt thick at 20 mm from the bottom of the page. Below the line, left align the statement "EVS24 International Battery, Hybrid and Fuel Cell Electric Vehicle Symposium" and right align the page number, all set in 9,5pt Times (L<sup>A</sup>T<sub>E</sub>X: "small").

## 4 Referencing

Referencing sources in the paper shall be done with sequential numerical references, between square brackets. Examples of citing references are given in the references section, for both books [1], journal articles[2] and websites[3]. Reference list is printed in 9,5pt text. (L<sup>A</sup>T<sub>E</sub>X: "small")

## 5 Figures, Tables and Equations

### 5.1 Figures

Captions for figures are 9,5pt (L<sup>A</sup>T<sub>E</sub>X: "small"), centered. Do not include separate lists of table and figure captions. Figures shall be sequentially numbered, lined up with the text, and referenced as Fig.1. The use of colour figures is welcomed, but the choice of colours should allow a suitable contrast when reproduced on a monochrome printer.

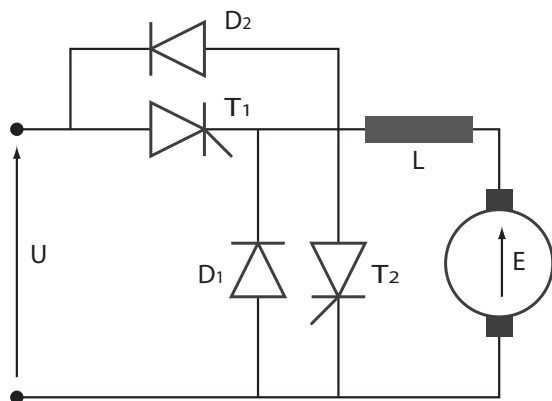


Figure 1: One-column figure

Figures shall be sized and aligned such that the outer edge of the printed material extends to the column boundaries. Single column figures should be sized to a width of 72 mm. Double column figures may be sized to a width of 160 mm, and should be positioned preferably on the top or the bottom of the page.

### 5.2 Tables

Table 1: Power levels for charging (230 V)

	Current (A)	Power (kW)
Standard	16	3,5
Semi-fast	32	7,0

Tables shall have their own sequential numbering independent from the figures numbering, and captions shall placed above the table. Tables spreading over 2 columns should be placed at the top or the bottom of the page.

### 5.3 Equations

Equations shall be set within the text and numbered sequentially with number enclosed in round brackets.

$$E = \int_0^t U \cdot I \cdot \cos \phi \cdot dt \quad (1)$$

## Acknowledgments

List acknowledgments here if appropriate.

## References

- [1] J.J. Romm. *The hype about Hydrogen*, ISBN 1-55963-704-8, Washington, Island Press, 2005.
- [2] P. Van den Bossche et.al., *SUBAT, an assessment of sustainable battery technology*, Journal of Power sources, ISSN 0378-7753, 162(2006), 913-919.
- [3] EVS-24, <http://www.evs24.org>, accessed on 2009-01-06.

## Authors



Authors should provide a short biography of authors. Biographies should have a typical length of 5 to 10 lines, in 9,5pt font (L<sup>A</sup>T<sub>E</sub>X: "small"), be limited to main educational background and description of current activities, and preferably be accompanied by a photograph sized 20 by 30 mm. The photograph shall be lined up with the bottom of the text paragraph.