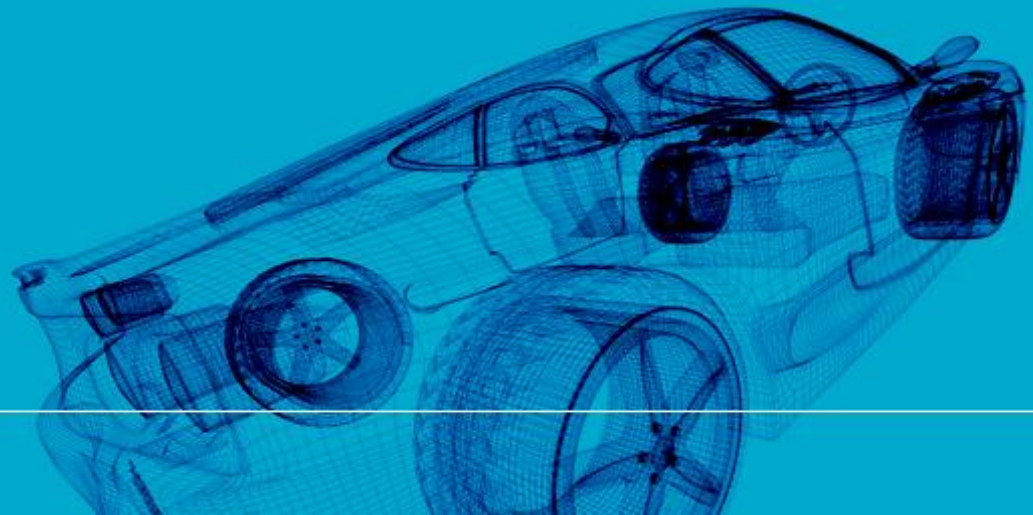


Making Urban Mobility Easy

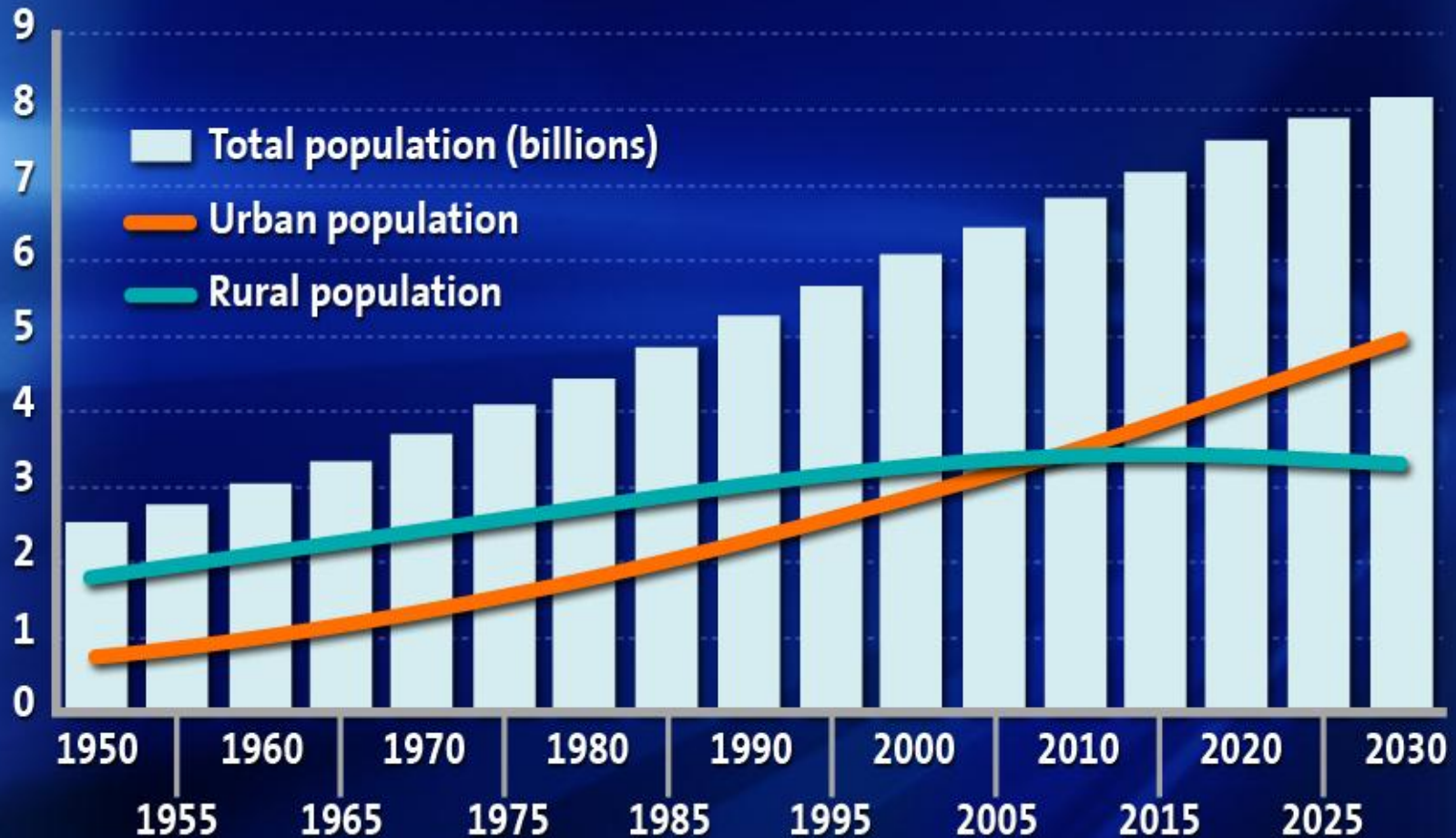


Qualcomm Pedigree

- 26 Years of Wireless Innovation
- \$15 Billion Fiscal 2011 Revenues
- \$2.5 Billion R&D Spend
- ~20,000 Employees
 - 85% in Research into all aspects of Wireless
 - Engaged with Major Standards Bodies & Regulatory Bodies
- Long history in Wireless Power Research



Why Solve Urban Mobility?



- **Urban Traffic Congestion and Parking Issues**

Source: GM 2012

Health Impacts of PM_{2.5}

- Poor air quality could contribute to 50,000 premature deaths per year across the UK
- Airborne pollution in the form of fine particles (PM_{2.5}) comes mostly from combustion sources; transport, domestic and industrial.

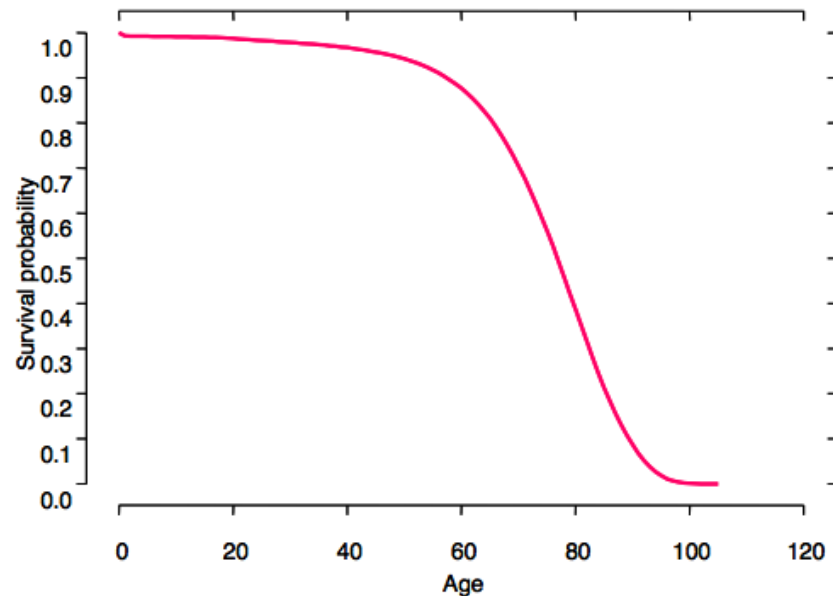


Figure 1 Typical shape of a survival curve showing the cumulative effect of mortality risks on the probability of surviving to various ages.

Mobile Meets Mobility – Opportunities to intersect



Navigation
Services



Safety and
Security



Application
Downloads



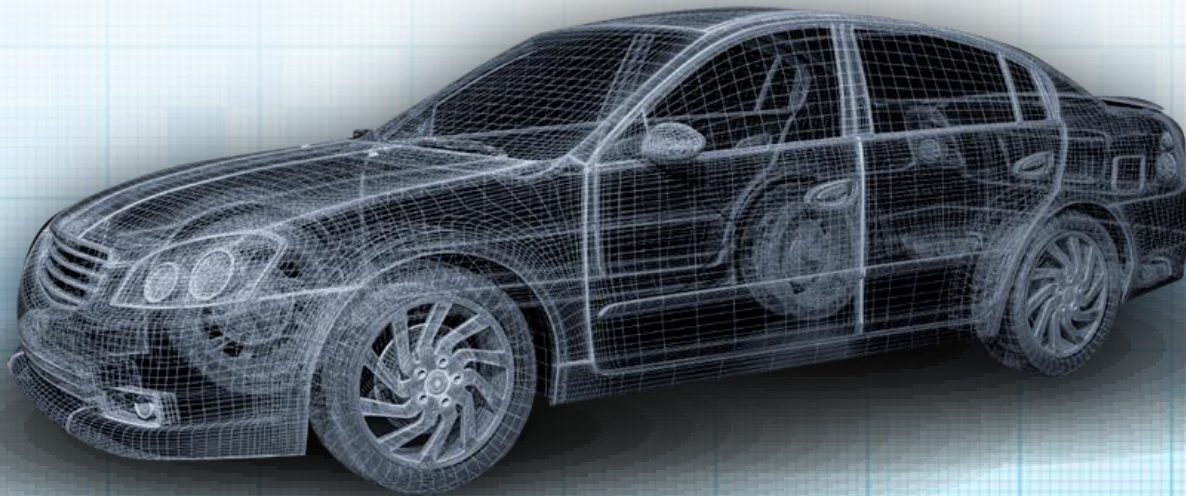
Content
Streaming



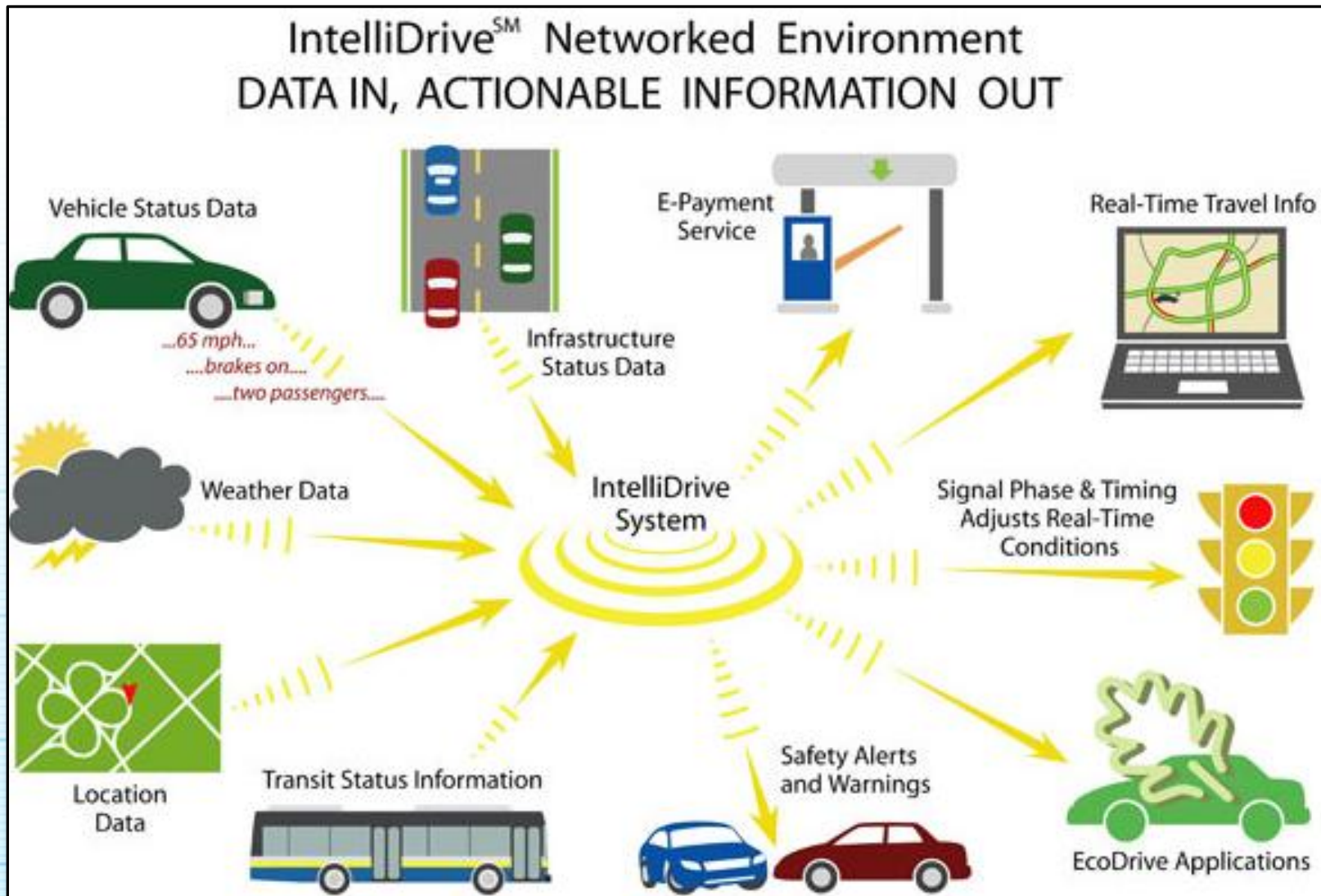
Mobile
Hotspot



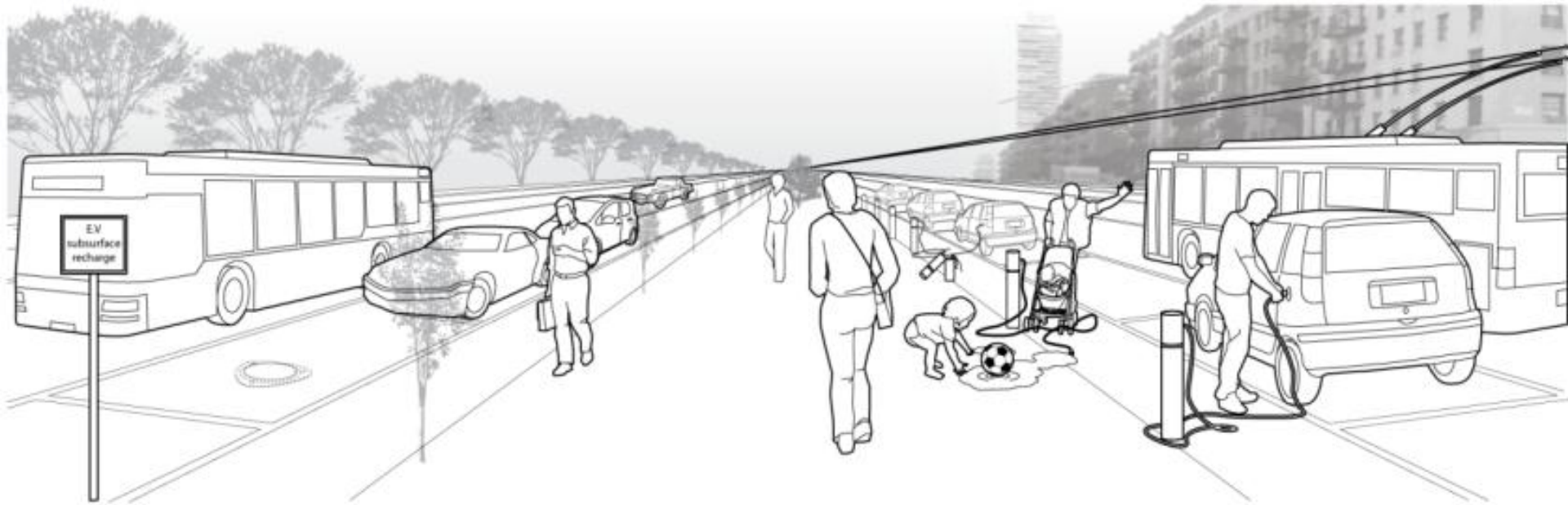
Wireless EV
Charging



Solving For Congestion



Urban Clutter – the unintended consequence of solving the health issue



Durability

- No moving parts
- Extremely rugged and tough
- Waterproof, weatherproof
- Impervious to chemicals, debris
- Low profile, crash-safe
- Vandal-proof, theft-proof
- No cord to steal or unplug

Aesthetics

- Doesn't damage historic city aesthetics
- Avoids unnecessary street clutter
- Maintains precious footpath area
- Eyesore of overhead cables is removed for buses
- Provides a subtle branding option for networks

Vision Meets reality



Office for Low
Emission Vehicles



Transport
for London

