

Comparison of Tab-to-Busbar Ultrasonic Joints for Electric Vehicle Li-ion Battery Applications

Abhishek Das, Anup Barai, Iain Masters, David Williams

WMG, University of Warwick, Coventry, CV4 7AL, United Kingdom, A.Das.1@warwick.ac.uk

Summary

Recent uptake in the use of Lithium-ion battery packs within electric vehicles has drawn significant attention to the selection of busbar material and corresponding thickness which are usually based on mechanical, electrical and thermal characteristics of the welded joints, material availability and cost. To determine joint behaviour corresponding to critical-to-quality criteria, this study uses one of the widely used joining technologies, ultrasonic metal welding (UMW) to produce tab to busbar joints using copper and aluminium busbars of varying thicknesses. Joints for electrical and thermal characterisation were selected based on the satisfactory mechanical strength determined from the T-peel tests. Electrical contact resistance and corresponding temperature rise at the joints were compared for different tab to busbar joints by passing current through the joints. The average resistance or temperature increase from 0.3 mm Al tab was 0.6 times higher than 0.3 mm Al tab irrespective of busbar selection.

Keywords: EV (electric vehicle), thin metal film, electrode, materials, powertrain, joining

1 Introduction

Lithium-ion (Li-ion) electrochemistry based secondary batteries are now widely used for electrification of automotive vehicles due to several advantages including high energy density, low self-discharge and portability [1, 2]. Greenhouse gases emission legislation has driven the automotive industry to develop fully electric vehicle (EV), hybrid or plug-in hybrid electric vehicle (HEV/PHEV) with low carbon emission [3, 4]. To assist in meeting emission legislation, automotive manufacturers are moving towards lightweight applications, intelligent automation or adapting new powertrain technology based on hybrid or pure secondary batteries. Furthermore, Li-ion batteries are progressively being used for large scale energy storage systems for grid applications [5]. As a consequence, there is substantial demand for battery manufacturing which involves a large number of individual cells to be connected either in series or parallel to deliver the required power and driving range [6]. For example, the widely used pouch cell format uses a tab to busbar connection as the electrical interconnect. Based on the module design, a number of pouch cells are to be connected within a module and several modules are arranged in a battery pack or storage unit. Therefore, a large number of tab to busbar joints are inevitable and each must provide electrically and thermally suitable connections in which vehicles are often exposed to harsh driving conditions [7]. The busbar plays an important role to provide desired electrical and thermal characteristics combined with mechanical strengths. In general, the selection of busbar material and its thickness are largely based on the current carrying capacity, mechanical and electrical characteristics and cost [8]. In addition, busbar material and thickness play a vital

role in avoiding excessive heat generation at the tab to busbar interconnects. Copper and aluminium are the widely used as busbar materials across the electrical, power, electronic or automotive industries [9-11]. Traditionally, copper has been used for busbars due to its excellent mechanical and electrical properties. However, more recently aluminium has been used especially for lightweight applications. Lewchalermwong, et al. [12] conducted a study on selection of busbar material based on electrical resistance and thermal expansion of both copper and aluminium busbars. However, extensive study considering the tab to busbar joints needs upmost research attention to avoid excessive resistance or heat generation at the tab to busbar interconnects.

One of the widely accepted joining methods to connect pouch cell tab to busbar is ultrasonic metal welding (UMW) due to several advantages including joining of dissimilar materials of varying thickness, joining of highly reflective and conductive material, multiple stack-ups and low thermal input during the welding [6, 13]. Li-ion battery packs for General Motors (GM) Chevy Volt, Nissan LEAF are currently being manufactured using UMW where the pouch cell tabs are connected with busbars [6, 14]. Research has been conducted on understanding ultrasonic metal welding joining mechanism [15-18], microstructure and material properties [19-21], thin to thick materials joining (i.e. varying stack-ups) [22], process robustness and optimisation [13, 23, 24], mechanical and vibrational behaviours of the welded joints [25, 26] which are reported in literature. In spite of UMW's extensive use and wide research, there are a few critical areas which are yet to be addressed including electrical resistance and thermal behaviour of the joint.

Little research can be found in the area of busbar to busbar connections. Published work mainly considering the mechanical joints such as nut and bolts [27, 28] focusing on evaluation of contact resistance at varying contact pressure, even identifying the effect of coating materials on the busbar [10]. However, UMW joint based electrical and thermal characterisation is missing from literature. An attempt has been made by Brand, et al. [29] to measure the electrical resistance at the UMW joint and they observed that maximum tensile load corresponded to lower electrical resistance when ultrasonic welding was employed to join two brass (CuZn37) test samples. Additionally, Das, et al. [30] reported the electrical resistance change and temperature rise at battery tab joints between Al/Cu[Ni] tab to single Cu busbar assembly. However, extensive electrical and thermal characterisation of ultrasonic welded joints considering different busbar materials with varying thicknesses are missing from literature. Combining the ultrasonic welded joints and busbar variation, limited work has been reported so far to characterise their critical-to-quality behaviours including mechanical strength, electrical resistance and temperature raise at the joint. Therefore, this study focuses on tab-to-busbar ultrasonic welded joints to characterise their critical-to-quality behaviour.

The remainder of this paper is arranged as follows: section 2 provides the details of experimental investigation including materials, ultrasonic welded joint preparation, set-ups for mechanical, electrical and thermal characterisation; the results and discussions are made in section 3; and conclusions are drawn in section 4.

2 Experimental details

Experimental plan was developed based on the joining requirements for different busbar thickness. Material selection, ultrasonic metal welded sample preparation, test set-ups for mechanical strength, electrical resistance and thermal characterisation are described in this section.

2.1 Tab and busbar materials

Typically, a pouch cell consists of two terminal tabs that protrude through seals to allow external connection [31]. In general, nickel-coated copper (Cu[Ni]) and aluminium (Al) are widely accepted tab materials for pouch cells and act as the negative and positive terminals respectively. In this study, 0.3 mm Cu[Ni] and Al tabs are used for the experimental investigations. The selection of bus bar material and corresponding thickness depend on module capacity, thermal management and current carrying capacity. Copper and aluminium are the most commonly used materials for busbar applications in electrical equipment [9] and their general properties at 20°C based on the International Annealed Copper Standard (IACS) are listed in Table 1. Although copper is better in terms of electrical resistivity, tensile strength and thermal conductivity, Pryor, et al. [9] argued that due to higher density of copper, when weight is taken into consideration aluminium has a conductivity that is approximately 1.85 times that of copper. As a consequence, for

applications where weight is a concern (e.g. automotive electric vehicle application), aluminium may be the better choice. Copper may be the better alternative when size and space are important. However, a comparative study of different busbars materials/thicknesses considering mechanical strength, electrical resistance and thermal behaviour of joints using ultrasonic metal welding is missing from literature.

Table 1: A comparison of Copper and aluminium properties [9, 32].

Properties	Copper (Cu)	Aluminium (Al)
Electrical resistance ($n\Omega$ mm)	17.2	28.3
Cross section for same conductivity (% IACS)	100	156
Weight for same conductivity (% IACS)	100	54
Thermal conductivity (W/m $^{\circ}$ K)	397	230
Temperature coefficient of resistivity (per $^{\circ}$ K)	0.0039	0.004
Density (g/cm 3)	8.91	2.7
Tensile strength (N/mm 2)	200-250	50-60

The main objectives of this study is to conduct a comparative study between aluminium and copper busbars when they are used for pouch cell based battery pack manufacture. Joint behaviour is characterised in terms of mechanical strength, electrical resistance and temperature rise. To identify the joint characteristics, Cu and Al busbar materials are chosen with varying thicknesses. The details of tab and busbar materials, their specifications and corresponding thicknesses are listed in Table 2. Both busbar and tab sample coupon dimensions were 100 mm in length by 25 mm in width [21], as shown in Figure 1(b).

Table 2: Tab and busbar materials used for experimental investigations.

		Material Details			
	Type	Material	Specification		Thickness [mm]
Upper material	Tabs	Aluminium (Al)	AW1050A-H18; BS EN546		0.3
		Ni-coated Copper (Cu[Ni])	CW004A-H040; BS EN1652 (C101SI)		0.3
Lower material	Busbar	Aluminium (Al)	AW1050A-H14; BS EN485		1.0, 1.5, 2.0, 2.5
		Copper (Cu)	CW004A-H065; (C101HH)	BS EN1652	1.0, 1.5, 2.0

2.2 Tab to busbar joint using ultrasonic metal welding

As ultrasonic metal welding is most suitable for thin to thick material, the tab was used as the upper part and busbar as the lower during joining, i.e. the sonotrode oscillation with defined amplitude propagated from the tab to the busbar which was supported by the stationary anvil. Ultrasonic metal welding was performed using Telsonic MPX ultrasonic welder as shown in Figure 1(a) operating at 20 kHz, having 6.5 kW maximum power and allowable amplitude variation from 30 μ m to 60 μ m.

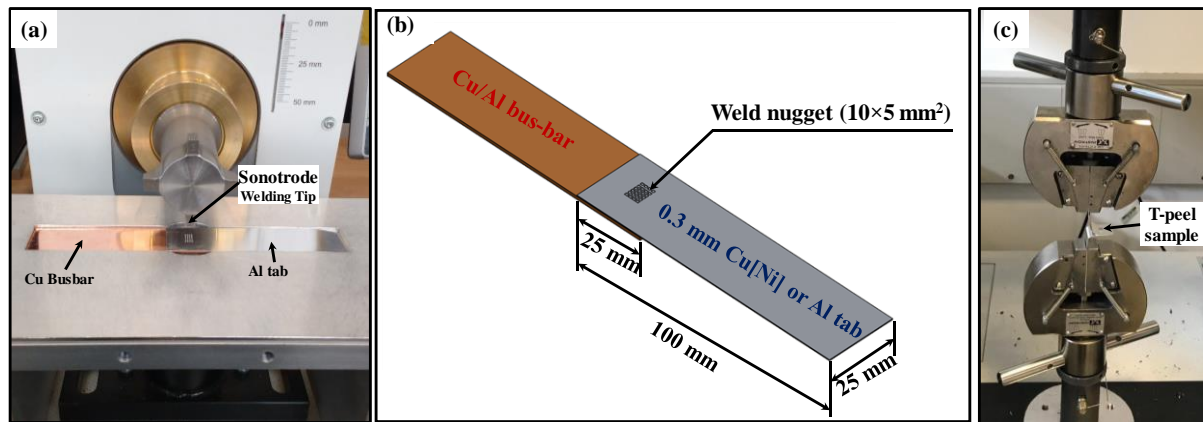


Figure 1: a) Ultrasonic metal welding joining set-up, (b) a pictorial example of ultrasonic welding to produce tab-to-busbar interconnect in lap configuration, and (c) T-peel test set-up for mechanical strength characterisation

Figure 1(b) shows the typical arrangement of placing the ultrasonic weld nugget (i.e. $10 \times 5 \text{ mm}^2$) at the centre of 25 mm overlap between tab and busbar. This lap configuration was used for both electrical and thermal characterisation. The T-peel test was used to evaluate joint strength with respect to the ultrasonic welding parameters. It can be observed from literature that researchers have used welding pressure, welding time and amplitude as the most influencing weld parameters to achieve satisfactory weld strength and weld quality [23, 24]. In this study, 0.3 mm Cu[Ni] and Al tabs were welded to 1.0 mm Cu and Al busbars respectively to identify satisfactory process parameters by varying welding pressure, welding time and amplitude of ultrasonic vibration. The process parameters and corresponding levels are given in Table 3. The trigger mode time was set at 0.2 s which allowed converting of the traversing pressure to welding pressure. The welding pressure was varied from 0.5 bar to 4.0 bar with incremental increases of 0.5 bar while amplitude of vibration and welding time were set at 35 μm and 0.25 sec respectively. These parametric values are chosen based on pilot tests. Five levels of amplitude were chosen from 30 μm to 50 μm with increments of 5 μm while welding pressure was kept constant at 1.5 bar and welding time at 0.25 sec. Similarly, the welding time was increased from 0.15 sec to 0.55 sec at 0.15 sec intervals when welding pressure and welding amplitude were hold at 1.5 bar and 50 μm respectively.

Table 3: Level of process parameters for experimentation.

Process parameter	Value
Welding Pressure (bar)	0.5, 1.0, 1.5, 2.0, 2.5, 3.0, 3.5, 4.0
Welding Amplitude (μm)	30, 35, 40, 45, 50
Welding Time (sec)	0.15, 0.25, 0.35, 0.45, 0.55

2.3 Set-ups for mechanical strength characterisation

The output variable chosen to represent the weld quality was the maximum load obtained from the T-peel tests. These T-peel tests were performed to evaluate the effects of welding process parameters on the joint strength. The test set-up for T-peel test is shown in Figure 1(c) where the samples (i.e. open end of tab and busbar) were bent by 90° in opposite directions allowing them to be held by lower static grip and upper moving grip. Using an Instron 3367 static test frame with 30kN load cell, a test speed of 20 mm/min was applied to perform the T-peel tests in order to minimize the unexpected dynamic effect for weld failure [20]. The peak load during the T-peel test was recorded in order to evaluate the mechanical strength of the weld and further used as a measure of weld performance. To obtain preferred process parameters with satisfactory T-peel load, tests were performed using the samples produced as listed in Table 3. Each test variant was repeated three times, and the average of the three replicates was used for analyses. Relying on the load-displacement characteristics, Das, et al. [13] defined three weld conditions which were under-weld, good-weld and over-weld. Furthermore, they explained these three categories using weld cross-sectional images where under-weld showed un-bonded gaps between the mating surface, good-weld exhibited uniform bonding along the weld cross-section, and over-weld was excessive thinning with tab broken zone. This weld classification was used in this study while evaluating the weld quality using T-peel tests.

2.4 Set-up for electrical and thermal characterisation

In order to evaluate the electrical resistance and temperature rise at the joint, the lap configuration samples, as shown in Figure 1(b), were produced using the parameters corresponding to maximum strength in the T-peel test. The test set-up for electrical and thermal characterisation is shown in Figure 2. The sample was mounted in a fixture using brass blocks which were connected to power supply and voltage sensor. An additional voltage sensor was placed to measure the potential difference across the joint when current was applied. The resistance was calculated using the induced voltage due to the application of current. As a result of resistive heat loss, the weld area heated up and the corresponding temperature raise was measured using a thermal camera placed directly above the weld location. A FLIR T440 thermal camera was employed to record the joint temperature during the current application. It has been reported that Li-ion pouch cells are often exposed to aggressive automotive duty cycles, such as a race cycle, which are dominated by high current application up to 300 amp [33, 34]. As the purpose of this study is to characterise the joint behaviour based on the busbar thickness, high value of current, i.e. 250 amp was passed through the joint for 60 sec to visualise the temperature rise. As a result of this current application, the resistance change coupled with temperature rise at the joint area were captured.

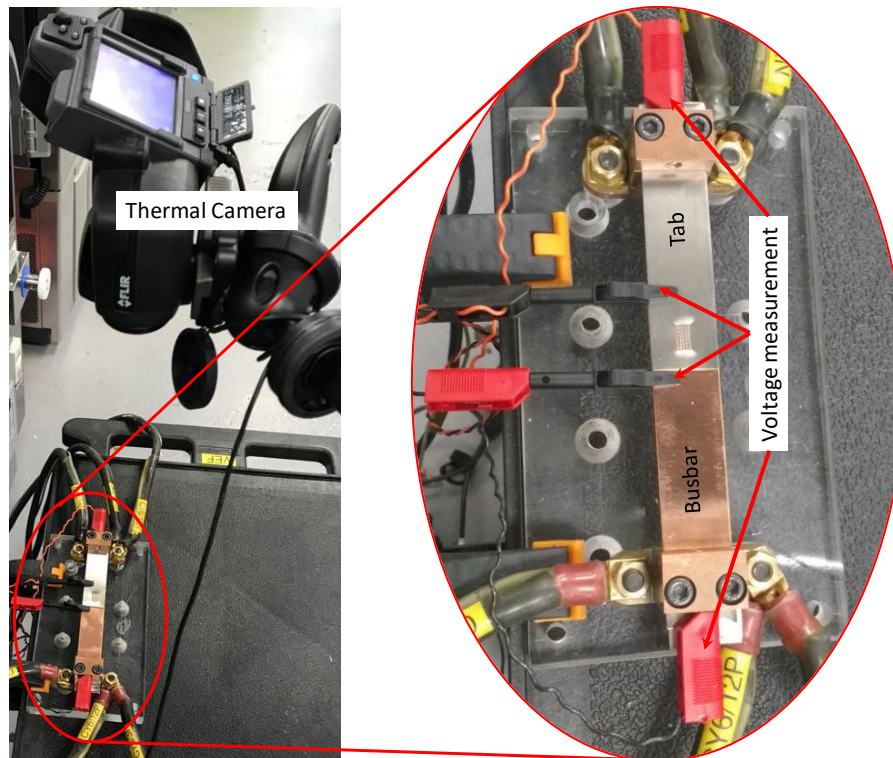


Figure 2: Test set-up for electrical and thermal characterisation of tab to busbar joints

3 Results and Discussions

3.1 Joint strength behaviour

In order to obtain the satisfactory ultrasonic welding process parameters for 0.3 mm Cu[Ni] and Al tabs for different busbar materials and thickness (as per Table 2), the mechanical strength of the weld was evaluated by performing T-peel tests. Initially, 0.3 mm Al tabs with 1.0 mm Al busbar and 0.3 mm Cu[Ni] tab with 1.0 mm Cu busbar were considered for process parameter selection. The maximum T-peel loads under varying welding pressure for both 0.3 mm Al tab to 1.0 mm Al busbar and 0.3 mm Cu[Ni] tab to 1.0 mm Cu busbar are plotted in Figure 3(a). In the case of 0.3 mm Al tab to 1.0 mm Al busbar joints, the T-peel strength was above 200 N in between 1 to 3.5 bar. However, beyond 2.5 bar the joints showed excessive Al tab deformation and were not recommended for further evaluation. Highest T-peel load and acceptable top surface deformation were obtained at 1.5 bar welding pressure. Similarly, for 0.3 mm Cu[Ni] tab to 1.0 mm Cu busbar joints, welding pressure of 1.5 bar produced the highest T-peel strength. Therefore, for both the 0.3 mm Al tab to 1.0 mm Al busbar and 0.3 mm Cu[Ni] tab to Cu busbar joints, 1.5 bar was chosen as welding pressure when varying busbar thicknesses were used. The effect of amplitude on T-peel strength for both the joint configurations are plotted in Figure 3(b). In general, under-welds were produced at low value of amplitudes (e.g. at 30/35 μm) and gradually shifted towards good-weld as amplitude increased [13]. For both configurations, an amplitude of 50 μm produced joints with the highest T-peel strength and was selected for electrical and thermal characterisation. A steady increase in T-peel load was observed with increasing welding time (see Figure 3(c)), especially for 0.3 mm Cu[Ni] tab to 1.0 mm Cu busbar joint where a 0.55 sec welding time resulted in the highest average T-peel load of 261 N. In contrast, T-peel load was slightly reduced for 0.3 mm Al tab to 1.0 mm Al busbar joints at 0.55 sec due to excessive deformation and over-weld condition [13]. As a balance between under-weld and over-weld, 0.35 sec welding time was preferred for producing joints of 0.3 mm Al tab to varying thickness of Al busbars. The preferred welding pressure, welding amplitude and welding time are listed in Figure 3(d) which was used for producing samples for electrical and thermal characterisation.

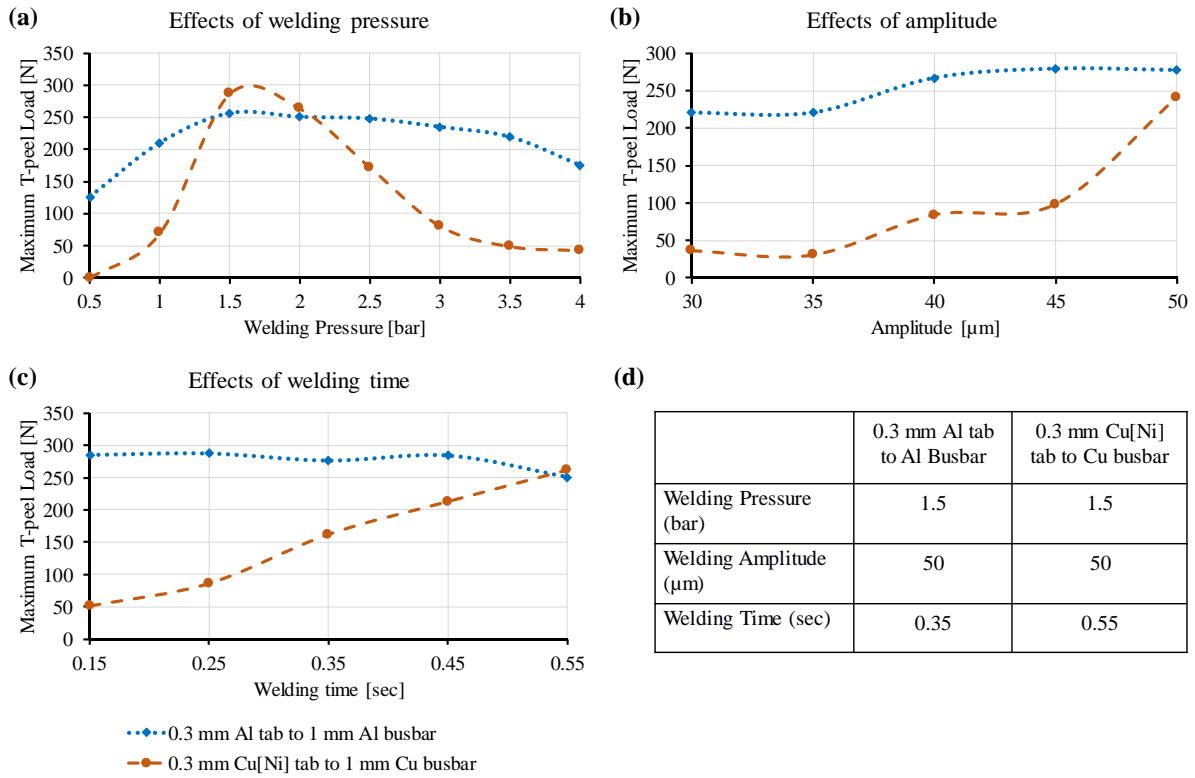


Figure 3: Maximum T-peel load obtained from (a) welding pressure variation, (b) amplitude variation, (c) welding time variation, and (d) parameters selected for producing samples for electrical and thermal characterisation.

3.2 Joint electrical resistance behaviour

Due to application of 250 amp current through the joints, the induced voltage across the joints were measured using the voltage sensors as shown in Figure 4. Based on the induced voltage, the electrical resistance was determined at the joint area for two different tabs based configurations, i.e. 0.3 mm Al tabs and 0.3 mm Cu[Ni] tab to different busbars. As current was applied for 60 sec, it was observed that the resistance is slowly increasing within the period of current application due to heat generation although the gradient of the profile depends on the busbar material and corresponding thickness. Figure 4 shows the electrical resistance change of 0.3 mm Al tab to different thickness of Al/Cu busbar joints due to application of current. Under uniform flow of electric current, the electrical resistance is expressed as $R = \rho l/A$, where ρ represents the resistivity, l is the length and A is the cross-sectional area [30, 35].

In this experimental investigation, voltage sensors were placed across the joints keeping the length of measured length constant. Similarly, identical ultrasonic welding parameters were used to produce uniform joints using different thickness of busbars to avoid variation during welding operation. However, the cross-sectional area depends on the thickness of the busbar. As the thickness of the busbar increases, it is expected to reduce the resistance of the measured joint. It is worth noting that the starting resistance gradually decreases with increasing thickness of busbar due to the fact that the resistance decreases with increasing cross-sectional area as the current value remains constant. For example, the starting resistance values were 0.089 mΩ, 0.087 mΩ, 0.080 mΩ, and 0.065 mΩ for 0.3 mm Al tab to 1.0 mm, 1.5 mm, 2.0 mm and 2.5 mm Al busbars, respectively. Comparatively low change in starting resistance was observed for Cu busbars, e.g. 0.084 mΩ, 0.083 mΩ, and 0.080 mΩ were obtained from 0.3 mm Al tab to 1.0 mm, 1.5 mm, and 2.0 mm Cu busbars. Accordingly, lower busbar thickness gave higher change in resistance values due to the application of current. For example, 0.034 mΩ resistance increase was obtained for 0.3 mm Al tab to 1.0 mm Al busbar joint. These resistance change values were decreased with increasing busbar thickness, e.g. 0.024 mΩ, 0.021 mΩ, and 0.016 mΩ resistance changes were obtained from 0.3mm Al tab to 1.5 mm, 2.0 mm and 2.5mm Al busbar joints. Similar behaviour was also observed for 0.3 mm Al tab to varying thickness of Cu busbar joints. The percentage change in resistance values for varying thickness of Al and Cu busbars are shown in

Figure 4 (h). It is worth noting that similar changes in resistance value were obtained from 2.0 mm Al busbar (i.e. 26.30%) and 1.5 mm Cu busbar (i.e. 26.92%) or 2.5 mm Al busbar (i.e. 24.33%) and 2.0 mm Cu busbar (i.e. 23.54%) joints.

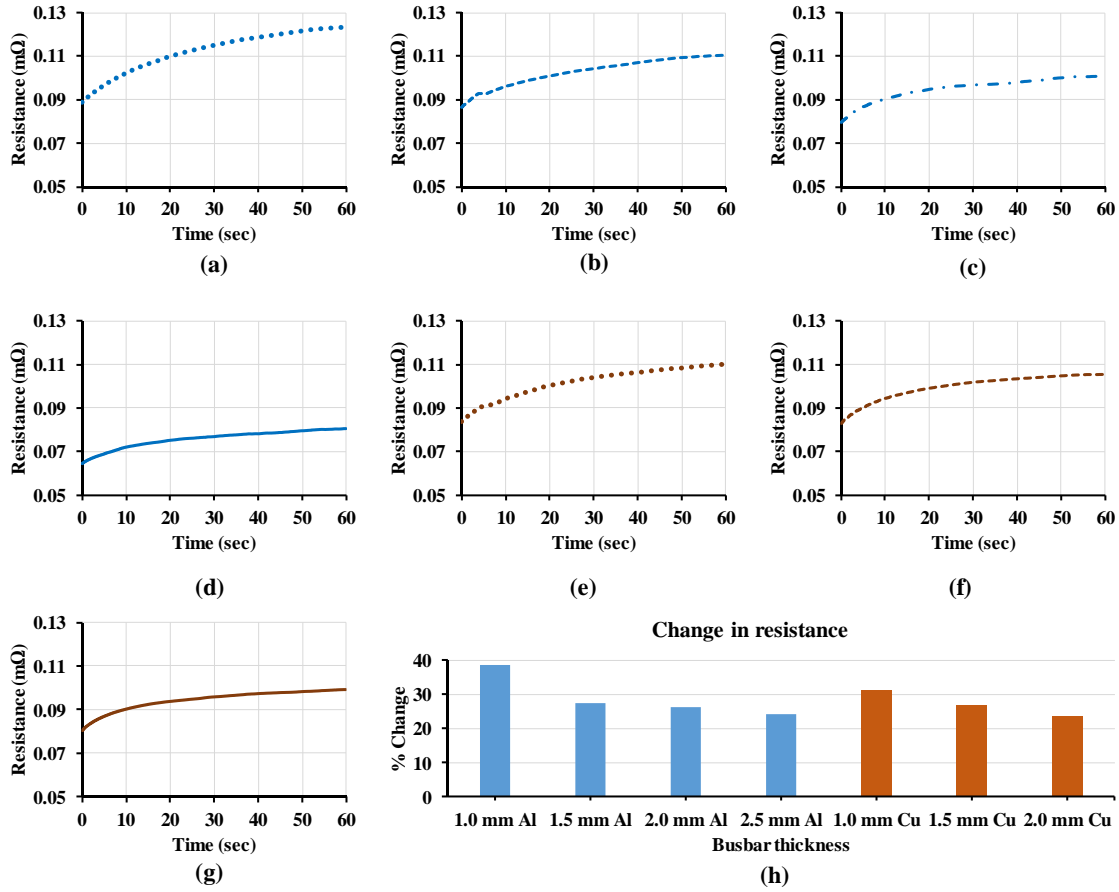


Figure 4: Electrical resistance profiles for 0.3 mm Al tab to (a) 1.0 mm Al busbar, (b) 1.5 mm Al busbar, (c) 2.0 mm Al busbar, (d) 2.5 mm Al busbar, (e) 1.0 mm Cu busbar, (f) 1.5 mm Cu busbar, and (g) 2.0 mm Cu busbar. The percentage (%) changes in resistance are shown in (h).

Similarly, joints of 0.3 mm Cu[Ni] tab to varying thickness of Al/Cu busbars have incremental change in electrical resistance due to the application of current which are shown in Figure 5. In the case of 0.3 mm Cu[Ni] tab to busbar joints, it was observed that electrical resistance at the start of the current application was almost the same for joints having busbar thickness of (i) 1.5 mm Al and 1.0 mm Cu (i.e. 0.057 mΩ), (ii) 2.0 mm Al and 1.5 mm Cu (i.e. 0.050 mΩ), and (iii) 2.5 mm Al and 2.0 mm Cu (i.e. 0.046 mΩ). Furthermore, it is evident from Figure 5(a) to (d) and (e) to (g) that the gradient of resistance change decreases with the increasing thickness of busbar and with higher thickness of busbar, the electrical resistance change profile exhibited a plateau. In line with starting resistance, the range of resistance increase (i.e. the difference in resistance values at the end and start of current application) gradually decreased with increase of busbar thickness for same materials. For example, maximum incremental increase of 0.013 mΩ was obtained for 0.3 mm Cu[Ni] tab to 1.0 mm Al busbar joint, and thereafter, the range of resistance increase was gradually decreased to 0.010 mΩ, 0.006 mΩ, and 0.005 mΩ for 1.5 mm, 2.0 mm and 2.5 mm Al busbars, respectively. In the case of 0.3 mm Cu[Ni] tab to varying Cu busbar joints, ranges of resistance increase were 0.0089 mΩ, 0.0053 mΩ and 0.0049 mΩ for 1.0 mm, 1.5 mm and 2.0 mm Cu busbars, respectively. The percentage changes in resistance for 0.3 mm Cu[Ni] tab to varying busbars are shown in Figure 5(h). A maximum of 20.52% increase in electrical resistance was obtained from 0.3 mm Cu[Ni] tab to 1.0 mm Al busbar joint and lower values were obtained from 2.5 mm Al busbar or 2.0 mm Cu busbar. The maximum absolute values of electrical resistance obtained at the end of current application from all the tab and busbar combinations are tabulated in Table 4. It can be observed that an average electrical resistance obtained from 0.3 mm Cu[Ni] tab is 0.6 times lower than 0.3 mm Al tab irrespective of busbar selection.

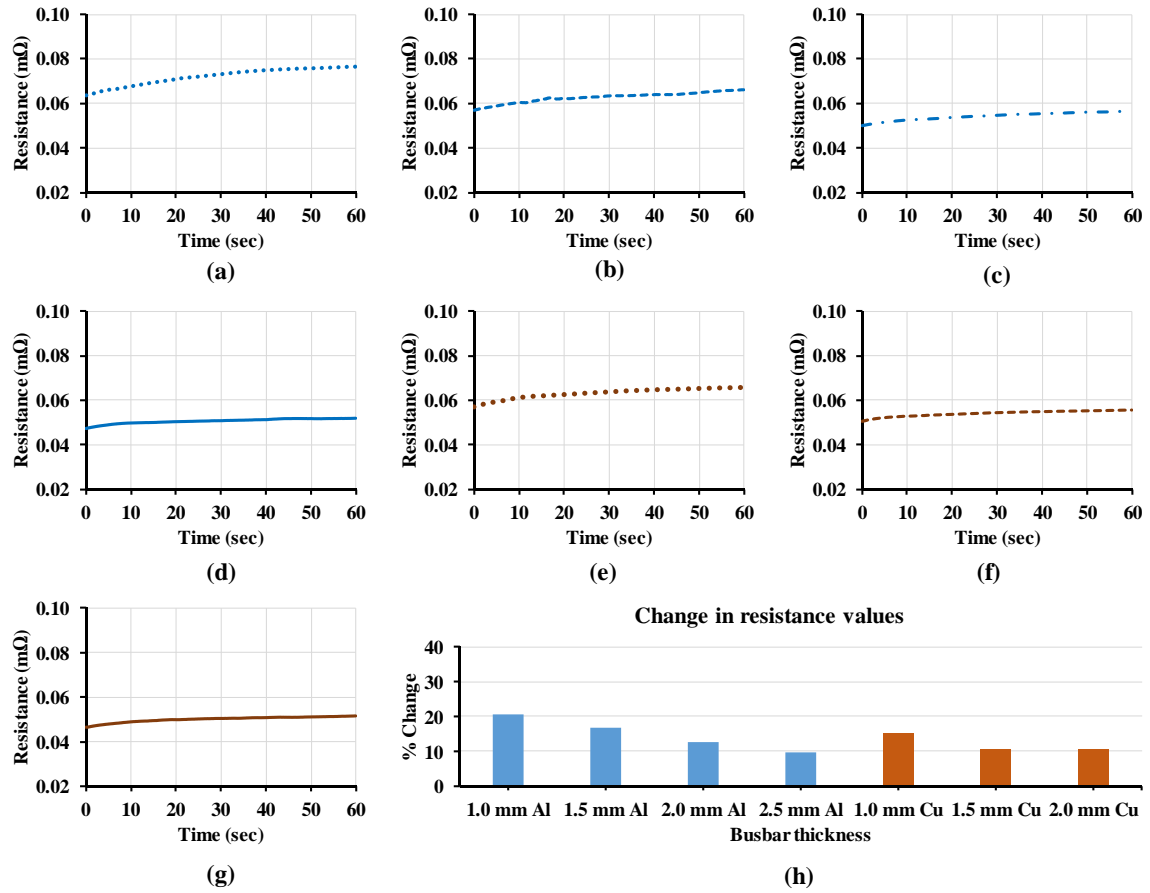


Figure 5: Electrical resistance profiles for 0.3 mm Cu[Ni] tab to (a) 1.0 mm Al busbar, (b) 1.5 mm Al busbar, (c) 2.0 mm Al busbar, (d) 2.5 mm Al busbar, (e) 1.0 mm Cu busbar, (f) 1.5 mm Cu busbar, and (g) 1.5 mm Cu busbar. The percentage (%) changes in resistance are shown in (h).

Table 4: The maximum values of electrical resistance obtained from all tab and busbar combinations.

	Al Busbar				Cu Busbar		
	1.0 mm	1.5 mm	2.0 mm	2.5 mm	1.0 mm	1.5 mm	2.0 mm
0.3 mm Al Tab	0.124	0.111	0.101	0.080	0.110	0.105	0.099
0.3 mm Cu[Ni] Tab	0.076	0.066	0.057	0.052	0.066	0.056	0.051

3.3 Joint thermal behaviour

Li-ion battery degradation is one of the biggest challenges in electric vehicle industries and one of the main causes for battery aging/ degradation is elevated temperature [36]. Hunt, et al. [37] argued that tab temperature raise is more alarming than battery surface temperature rise and they concluded that tab joint cooling rather than surface cooling would be equivalent to extending the lifetime of a pack by 3 times, or reducing the lifetime cost by 66%. The temperature profiles of tab to busbar joints are reported in Figure 6. All the tests were performed with same initial start temperature of 25° C and the maximum temperature obtained at the end of the tests were different which was due to the combination of tab and busbar materials along with their associated thicknesses. Similar to the change in electrical resistance, the temperature at the joint increases due heat generation and subsequent electrical resistance change. For example, the highest temperature of 96.18° C was measured when 250 amp current was passed through 0.3 mm Al tab to 1.0 mm Al busbar joint for 60 sec. With an increase in busbar thickness, the maximum temperature measured at the joint reduced due to a number of reasons including initial resistance, thermal conductivity, thermal mass and electrical resistance change. For example, maximum temperature obtained for 0.3 mm Al tab to 1.5 mm, 2.0 mm and 2.5 mm Al busbar joints were 80.27° C, 67.83° C, and 59.97° C respectively. In general, copper

busbar based joints were not heated as much as Al busbar based joints due to higher thermal conductivity and lower resistance change. For instance, the temperature raise at 0.3 mm Al tab to 2.0 mm Al busbar joint was 67.83° C which is considerably higher than the temperature raise at 0.3 mm Al tab to 2.0 mm Cu busbar joint (i.e. 50.07). Figure 6 (a) and (b) show the temperature responses for the 0.3 mm Al tab to varying thicknesses of Al and Cu busbar joints respectively. The maximum temperature obtained from the 2.5 mm Al busbar joint (i.e. 59.97° C) is higher than the measured temperature from any of the Cu busbar joints. Therefore, the performance of copper busbar was better when Al was used as tabs. The performance of 0.3mm Cu[Ni] tab to Al and Cu busbar joints are plotted in Figure 6(c) and (d) respectively. As copper is electrically and thermally a better conductor than Al, the temperature rise were lower for Cu[Ni] tab to busbar joints. For example, the maximum temperature measured for 0.3 mm Cu[Ni] tab to 1.0 mm Al busbar joint was 66.96° C which was significantly lower than temperature obtained from 0.3 mm Al tab to 1.0 mm Al busbar joint (i.e. 96.18° C). A comparative percentage (%) change in temperature values obtained from 0.3 mm Al and Cu[Ni] tabs to busbar joints are given in Figure 7. Similar to electrical resistance responses, the average temperature increase from 0.3 mm Al tab was 0.6 times higher than 0.3 mm Al tab irrespective of busbar selection.

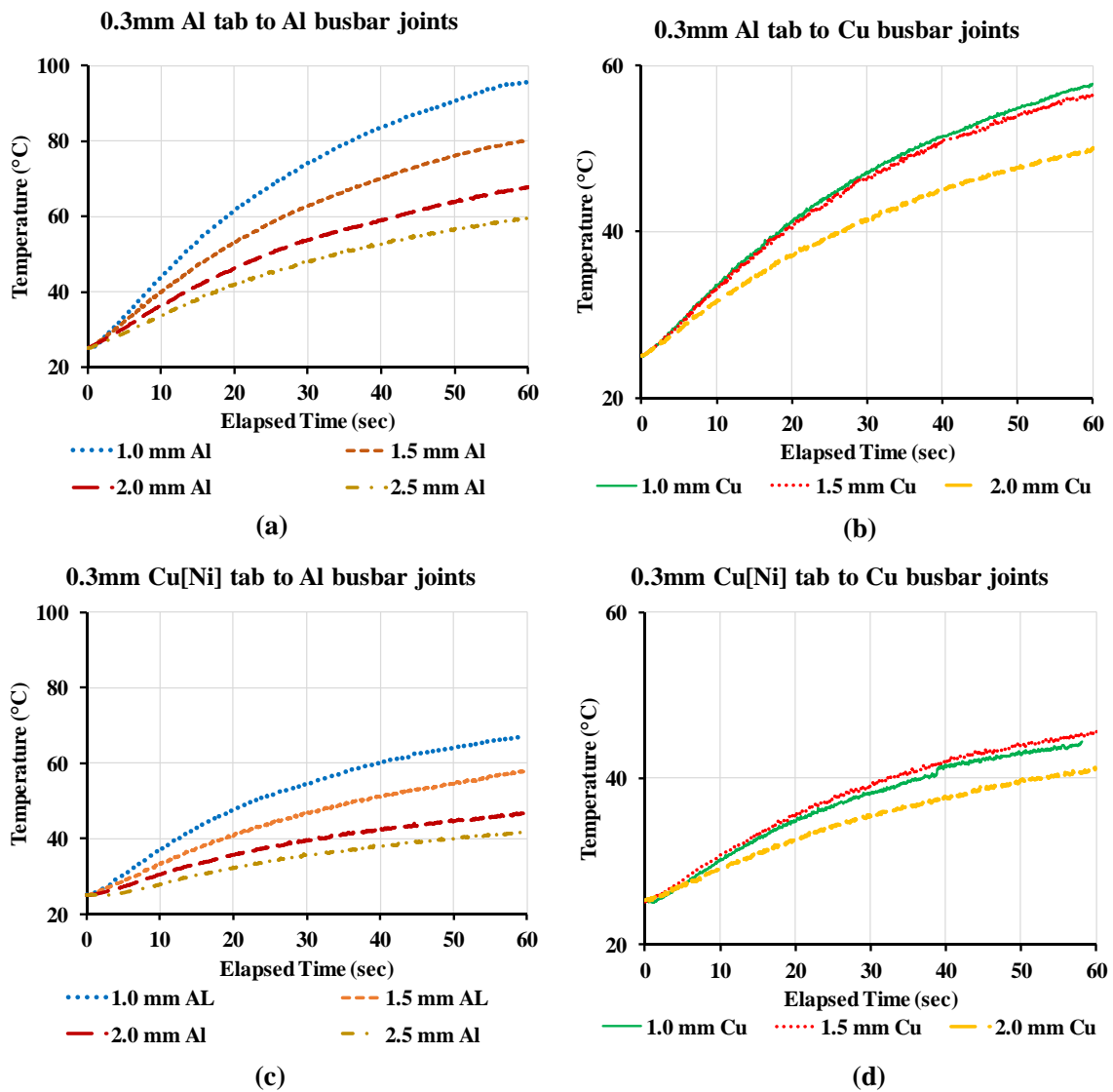


Figure 6: The temperature raise profiles due to application of 250 amp current for 60 s through (a) 0.3 mm Al tab to different Al busbar joints, (b) 0.3 mm Al tab to different Cu busbar joints, (c) 0.3 mm Cu[Ni] tab to different Cu busbar joints, and (d) 0.3 mm Cu[Ni] tab to different Cu busbar joints.

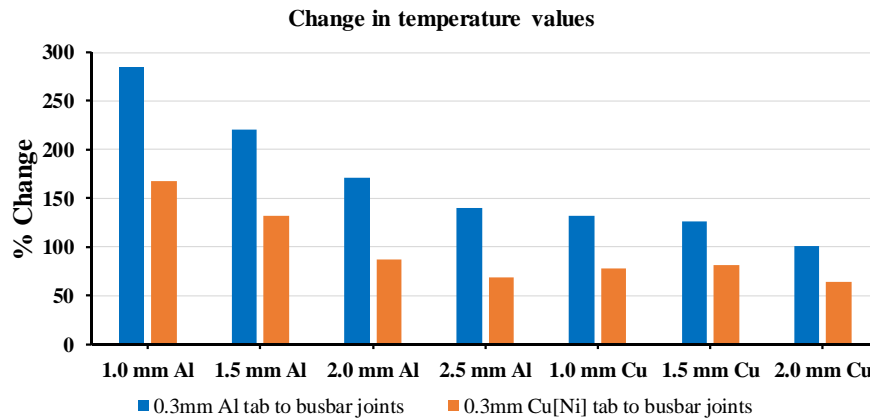


Figure 7: The percentage (%) changes in temperature due to application of 250 amp current for 60 s through different tab to busbar assemblies.

4 Conclusions

This study compared the mechanical strength, electrical resistance and thermal behaviours of tab to busbar joints. The critical-to-quality criteria joint criteria, i.e. mechanical strength, electrical resistance and temperature raise were evaluated for 0.3mm Al and Cu[Ni] tabs to varying thicknesses of Al and Cu busbar joints. Joint mechanical strength was measured using the T-peel tests to find the preferred joining parameters for 0.3 mm Al tabs to busbars (i.e. 1.5 bar welding pressure, 50 μ m welding amplitude and 0.35 sec welding time) and 0.3 mm Cu[Ni] tabs to busbars (i.e. 1.5 bar welding pressure, 50 μ m welding amplitude and 0.55 sec welding time). These UMW process parameters were used to produce samples for electrical and thermal characterisation. This paper significantly explores the following areas:

- Electrical resistance change was decreasing with the increasing thickness of busbar and with higher thickness of busbar, the electrical resistance change profile exhibited a plateau. It was observed that equivalent resistance changes are obtained from 0.3 mm Al/Cu[Ni] tab to 1.5 mm Al busbar and 1.0 mm Cu busbar.
- The temperature raise profiles showed that increase in busbar thickness, the maximum temperature measured at the joint was reduced. Additionally, the average temperature increase from 0.3 mm Al tab was 0.6 times higher than 0.3 mm Al tab irrespective of busbar selection.

It provides guidelines for suitable busbar selection using UMW to facilitate for better battery pack manufacturing. Furthermore, these results can be used for modelling and simulation to evaluate whole module performance.

Acknowledgments

This research has been partially supported by WMG Centre High Value Manufacturing (HVM) Catapult and Research Development Fund from The University of Warwick, UK.

References

- [1] R. Faria, P. Moura, J. Delgado, A.T. de Almeida, *A sustainability assessment of electric vehicles as a personal mobility system*, Energy Conversion and Management, 61 (2012) 19-30.
- [2] A. Das, D. Li, D. Williams, D. Greenwood, *Joining technologies for automotive battery systems manufacturing*, World Electric Vehicle Journal, 9 (2018) 22.
- [3] E. UNION, *Regulation (EU) No 333/2014 of the European parliament and of the COUNCIL of 11 March 2014 amending regulation (EC) no 443/2009 to define the modalities for reaching the 2020 target to reduce CO 2 emissions from new passenger cars*, Official Journal of the European Union, (2014).
- [4] E. Union, *Comparative study on the differences between the EU and US legislation on emissions in the automotive sector*, (2016).

- [5] M.M. Thackeray, C. Wolverton, E.D. Isaacs, *Electrical energy storage for transportation—approaching the limits of, and going beyond, lithium-ion batteries*, Energy & Environmental Science, 5 (2012) 7854-7863.
- [6] A. Das, D. Li, D. Williams, D. Greenwood, *Weldability and shear strength feasibility study for automotive electric vehicle battery tab interconnects*, Journal of the Brazilian Society of Mechanical Sciences and Engineering, 41 (2019) 54.
- [7] S.S. Lee, T.H. Kim, S.J. Hu, W.W. Cai, J.A. Abell, *Joining Technologies for Automotive Lithium-Ion Battery Manufacturing: A Review*, in: ASME 2010 International Manufacturing Science and Engineering Conference, Pennsylvania, USA, 2010, pp. 541-549.
- [8] L. Kirkpatrick, *Aluminum electrical conductor handbook*, The Aluminum Association, (1989).
- [9] L. Pryor, R. Schlobohm, B. Brownell, *A comparison of aluminum vs. copper as used in electrical equipment*, GE Industrial Solutions, Plainville, CT, (2008).
- [10] T. Fuhrmann, S. Schlegel, S. Grossmann, M. Hoidis, *Comparison between nickel and silver as coating materials of conductors made of copper or aluminum used in electric power engineering*, in: ICEC 2014; The 27th International Conference on Electrical Contacts, 2014, pp. 1-6.
- [11] G. Flood, *Ultrasonic energy welds copper to aluminum*, (1997).
- [12] N. Lewchalermwong, M. Masomtob, V. Lailuck, C. Charoenphonphanich, *Material selection and assembly method of battery pack for compact electric vehicle*, IOP Conference Series: Materials Science and Engineering, 297 (2018) 012019.
- [13] A. Das, I. Masters, D. Williams, *Process robustness and strength analysis of multi-layered dissimilar joints using ultrasonic metal welding*, The International Journal of Advanced Manufacturing Technology, (2018) 1-20.
- [14] Design Possibilities for the Chevy Bolt, 2015, accessed on 2017-07-05.
- [15] I.E. Gunduz, T. Ando, E. Shattuck, P.Y. Wong, C.C. Doumanidis, *Enhanced diffusion and phase transformations during ultrasonic welding of zinc and aluminum*, Scripta Materialia, 52 (2005) 939-943.
- [16] T.H.S. AMBEKAR, *Additional studies on interface temperatures and bonding mechanisms of ultrasonic welds*, (1970).
- [17] G.D. Janaki Ram, Y. Yang, B.E. Stucker, *Effect of process parameters on bond formation during ultrasonic consolidation of aluminum alloy 3003*, Journal of Manufacturing Systems, 25 (2006) 221-238.
- [18] J. Harthoorn, *Ultrasonic metal welding*, in, Technische Hogeschool Eindhoven, 1978.
- [19] V.K. Patel, S.D. Bhole, D.L. Chen, *Microstructure and mechanical properties of dissimilar welded Mg–Al joints by ultrasonic spot welding technique*, Science and Technology of Welding and Joining, 17 (2012) 202-206.
- [20] S. Shawn Lee, T. Hyung Kim, S. Jack Hu, W.W. Cai, J.A. Abell, J. Li, *Characterization of Joint Quality in Ultrasonic Welding of Battery Tabs*, Journal of Manufacturing Science and Engineering, 135 (2013) 021004-021013.
- [21] M. Shakil, N.H. Tariq, M. Ahmad, M.A. Choudhary, J.I. Akhter, S.S. Babu, *Effect of ultrasonic welding parameters on microstructure and mechanical properties of dissimilar joints*, Materials & Design, 55 (2014) 263-273.
- [22] D. Lee, E. Kannatey-Asibu, W. Cai, *Ultrasonic Welding Simulations for Multiple Layers of Lithium-Ion Battery Tabs*, Journal of Manufacturing Science and Engineering, 135 (2013) 061011-061011-061013.
- [23] S. Elangovan, K. Prakasan, V. Jaiganesh, *Optimization of ultrasonic welding parameters for copper to copper joints using design of experiments*, The International Journal of Advanced Manufacturing Technology, 51 (2010) 163-171.
- [24] T.H. Kim, J. Yum, S.J. Hu, J.P. Spicer, J.A. Abell, *Process robustness of single lap ultrasonic welding of thin, dissimilar materials*, CIRP Annals - Manufacturing Technology, 60 (2011) 17-20.
- [25] B. Kang, W. Cai, C. A. Tan, *Vibrational energy loss analysis in battery tab ultrasonic welding*, Journal of Manufacturing Processes, 16 (2014) 218-232.
- [26] B. Kang, W. Cai, C. A. Tan, *Dynamic Response of Battery Tabs Under Ultrasonic Welding*, Journal of Manufacturing Science and Engineering, 135 (2013) 051013-051013-051011.

- [27] U. Khayam, N.P.Y. Hadisoeseño, Suwarno, A. Risdiyanto, *Reducing contact resistance of high current connectors on electric vehicle by controlling contact pressure and addition of plating material*, in: 2017 4th International Conference on Electric Vehicular Technology (ICEVT), 2017, pp. 61-64.
- [28] J. Gatherer, *A study of the effect of various material combinations on the bolted contacts of busbars*, in, 2013.
- [29] M.J. Brand, P.A. Schmidt, M.F. Zaeh, A. Jossen, *Welding techniques for battery cells and resulting electrical contact resistances*, Journal of Energy Storage, 1 (2015) 7-14.
- [30] A. Das, T.R. Ashwin, A. Barai, *Modelling and characterisation of ultrasonic joints for Li-ion batteries to evaluate the impact on electrical resistance and temperature raise*, Journal of Energy Storage, 22 (2019) 239-248.
- [31] JMBS, Our Guide to Batteries, in, 2015.
- [32] D. Chapman, T. Norris, *Copper for Busbars: Guidance for Design and Installation*, Copper Development Association, 2014.
- [33] E. Hosseinzadeh, R. Genieser, D. Worwood, A. Barai, J. Marco, P. Jennings, *A systematic approach for electrochemical-thermal modelling of a large format lithium-ion battery for electric vehicle application*, Journal of Power Sources, 382 (2018) 77-94.
- [34] D. Worwood, E. Hosseinzadeh, Q. Kellner, J. Marco, D. Greenwood, R. Mcglen, W.D. Widanage, A. Barai, P. Jennings, *Thermal analysis of a lithium-ion pouch cell under aggressive automotive duty cycles with minimal cooling*, in: 6th Hybrid and Electric Vehicles Conference (HEVC 2016), 2016, pp. 1-6.
- [35] P.L. Rossiter, *The electrical resistivity of metals and alloys*, Cambridge university press, 1991.
- [36] T. Waldmann, M. Wilka, M. Kasper, M. Fleischhammer, M. Wohlfahrt-Mehrens, *Temperature dependent ageing mechanisms in Lithium-ion batteries – A Post-Mortem study*, Journal of Power Sources, 262 (2014) 129-135.
- [37] I.A. Hunt, Y. Zhao, Y. Patel, G. Offer, *Surface cooling causes accelerated degradation compared to tab cooling for lithium-ion pouch cells*, Journal of The Electrochemical Society, 163 (2016) A1846-A1852

Authors



Dr Abhishek Das is a research fellow at WMG, University of Warwick, UK. He received his PhD in manufacturing from University of Warwick in 2016. He is working at WMG's centre for the High Value Manufacturing Catapult. His research interests are battery interconnects joining, material testing and characterisation, modelling and simulation of sheet metal assembly, metrology & measurement, Statistical Process Control, advance manufacturing processes.



Dr Anup Barai is an Assistant Professor at WMG, University of Warwick, UK. Dr Barai deliver research which has tangible impact on industrial and academic researcher's success, making fundamental changes in the way energy storage systems are characterised. While working full time for WMG, Anup studied part-time for a PhD degree, which he completed in February 2016.



Dr Iain Masters is a senior research fellow at WMG with over twenty years' experience in the defence and aerospace sectors. Dr Masters' current focus is supporting the High Value Manufacturing Catapult project on the structural modelling of a battery cell and the impact of increasing recycled content on the formability of aluminium alloys.



Mr David Williams is Head of Programme Delivery for the Lightweight Technologies theme of WMG's centre for the High Value Manufacturing Catapult. David has over twenty years' experience in managing product and process development projects in FMCG, IT and automotive sectors, specialising in simulation and modelling of solid and fluid systems, dimensional management and product complexity.