



Battery Ageing • Battery Models • Battery Diagnostics • Battery Pack Design • Electromobility • Stationary Energy Storage • Energy System Analysis

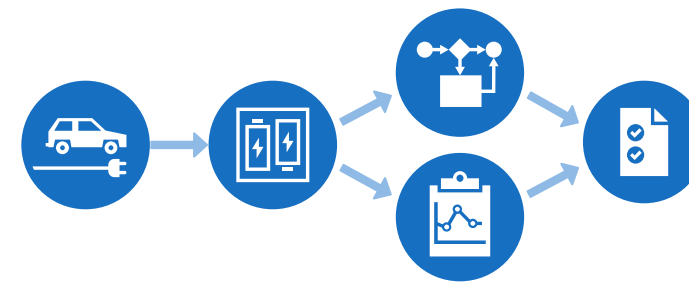
Systematic Battery State Estimation Algorithm Assessment – a Model-in-the-Loop Approach

35th International Electric Vehicle Symposium (EVS35)
Oslo, Norway

13.06.2022

Dominik Jöst

Katharina Quade, Franziska Berger, Dirk Uwe Sauer




EVS35
OSL2022

Chair for Electrochemical Energy Conversion
and Storage Systems

ISEA
Power
Electronics
and Electrical
Drives

RWTHAACHEN
UNIVERSITY

Lithium-Ion Battery Management



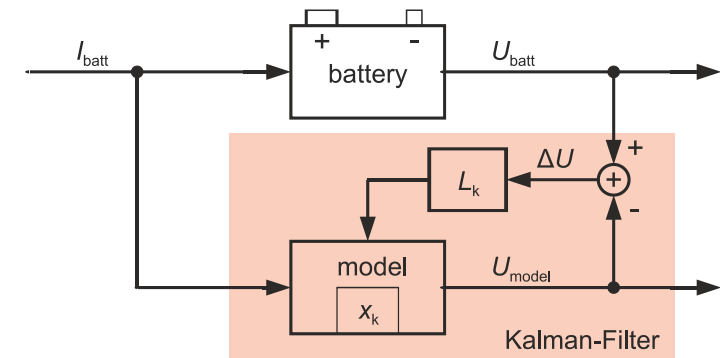
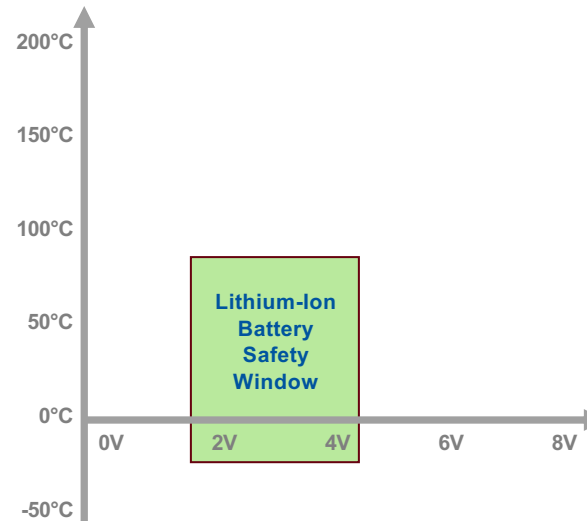
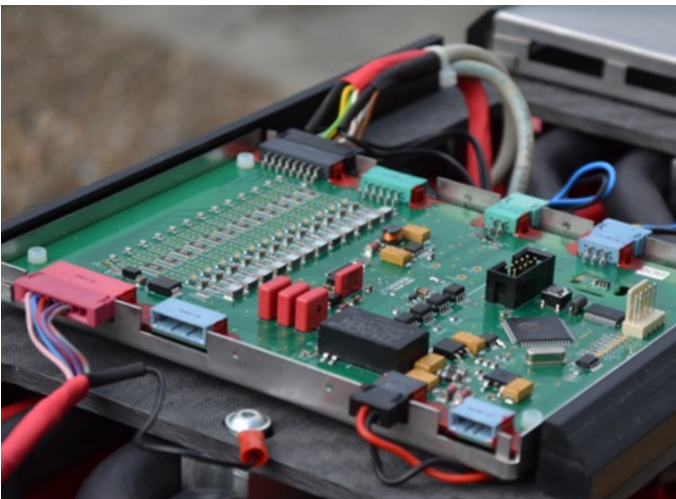
BMS Hardware
Measure and Compute



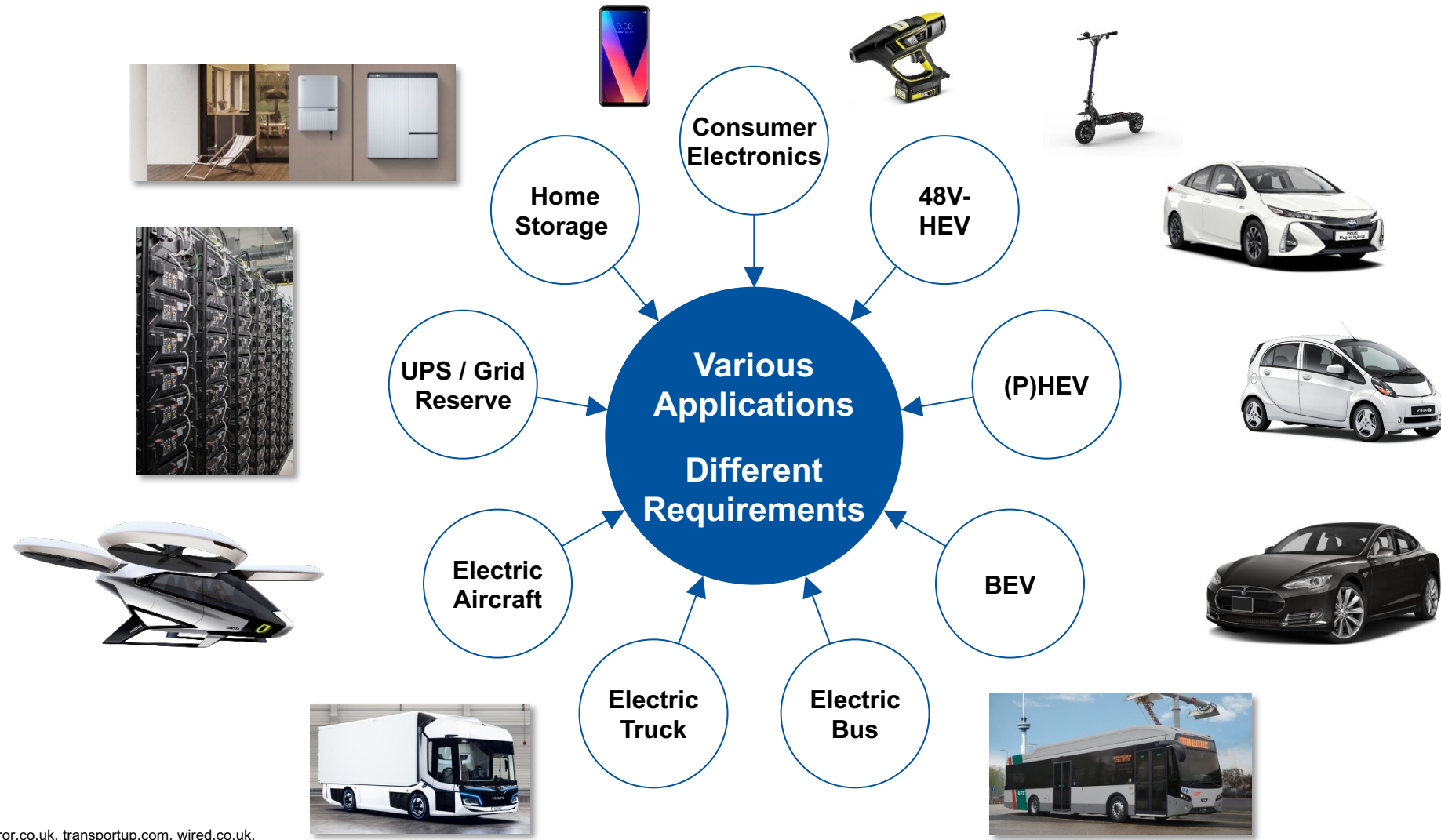
Goal 1
Safety



Goal 2
Optimized Battery Use



Applications for Lithium-Ion Batteries



Sources: autoblog.com, mirror.co.uk, transportup.com, wired.co.uk, forschung-energiespeicher.info, lg.com, kaercher.com; zigwheels.my

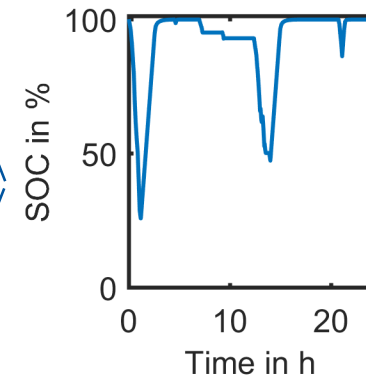
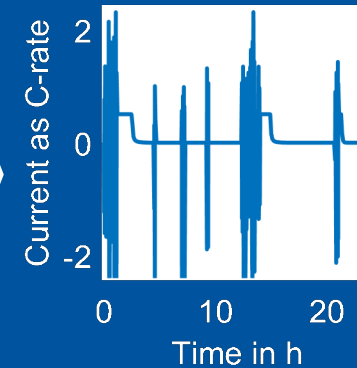
Application Characteristics - Example

Small BEV

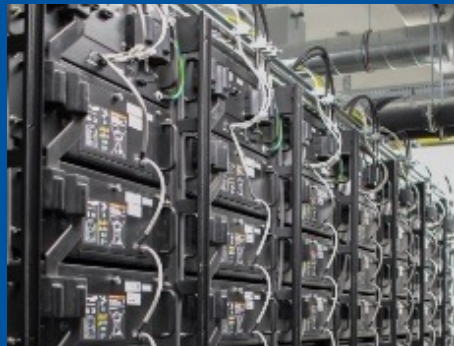


Source: zigwheels.my

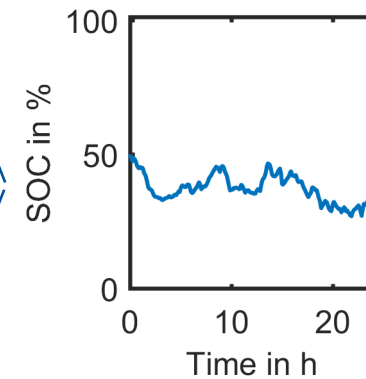
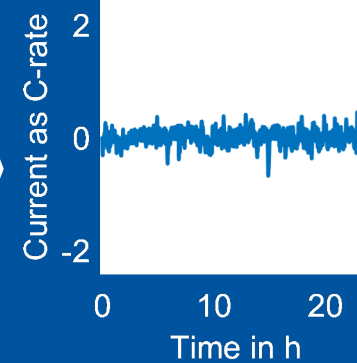
16 kWh
88 Cells
-20°C – 50°C

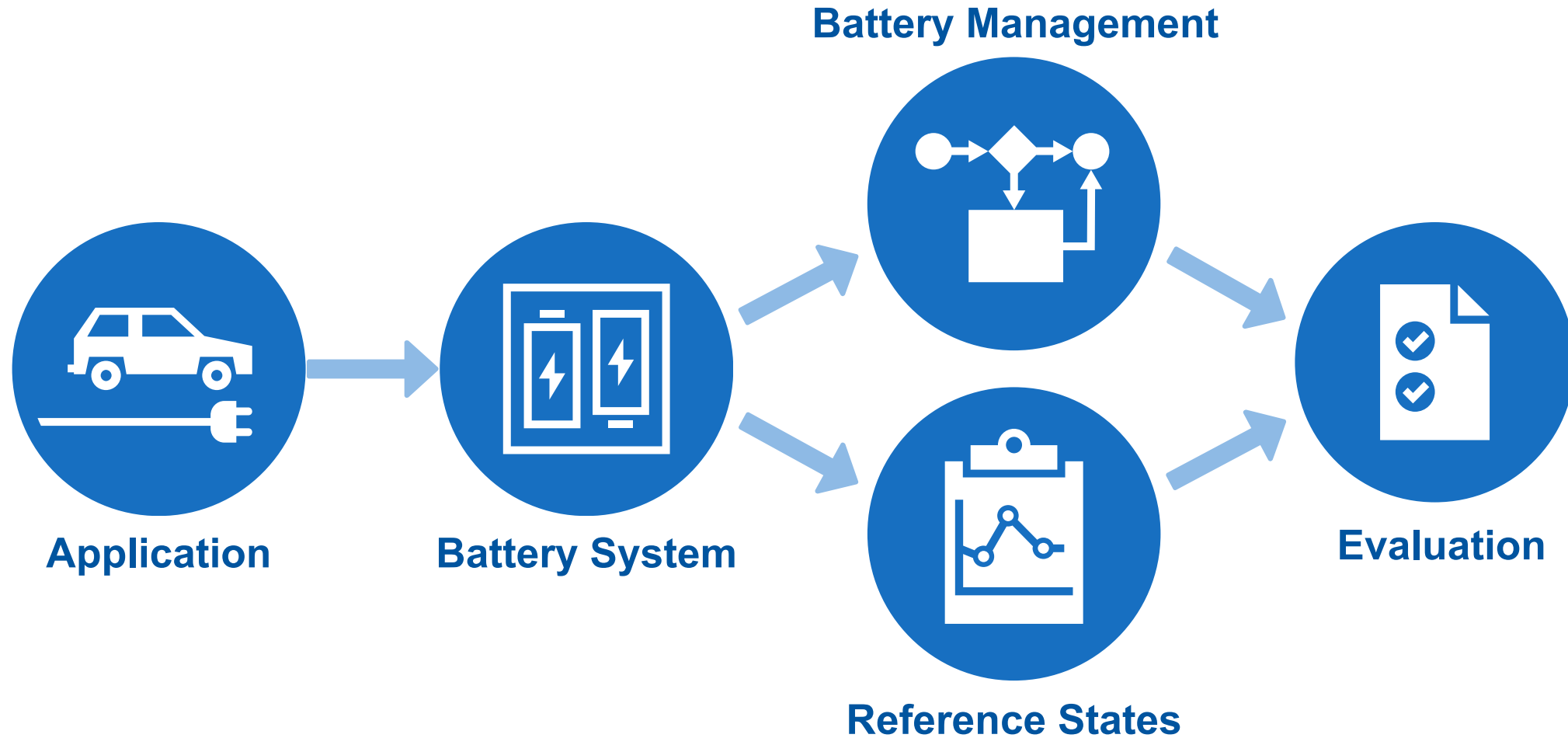
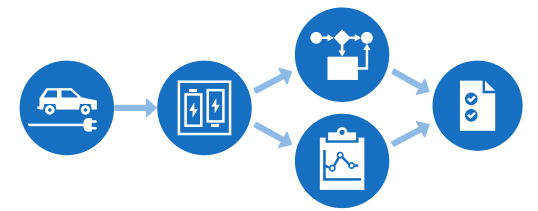


Primary Reserve

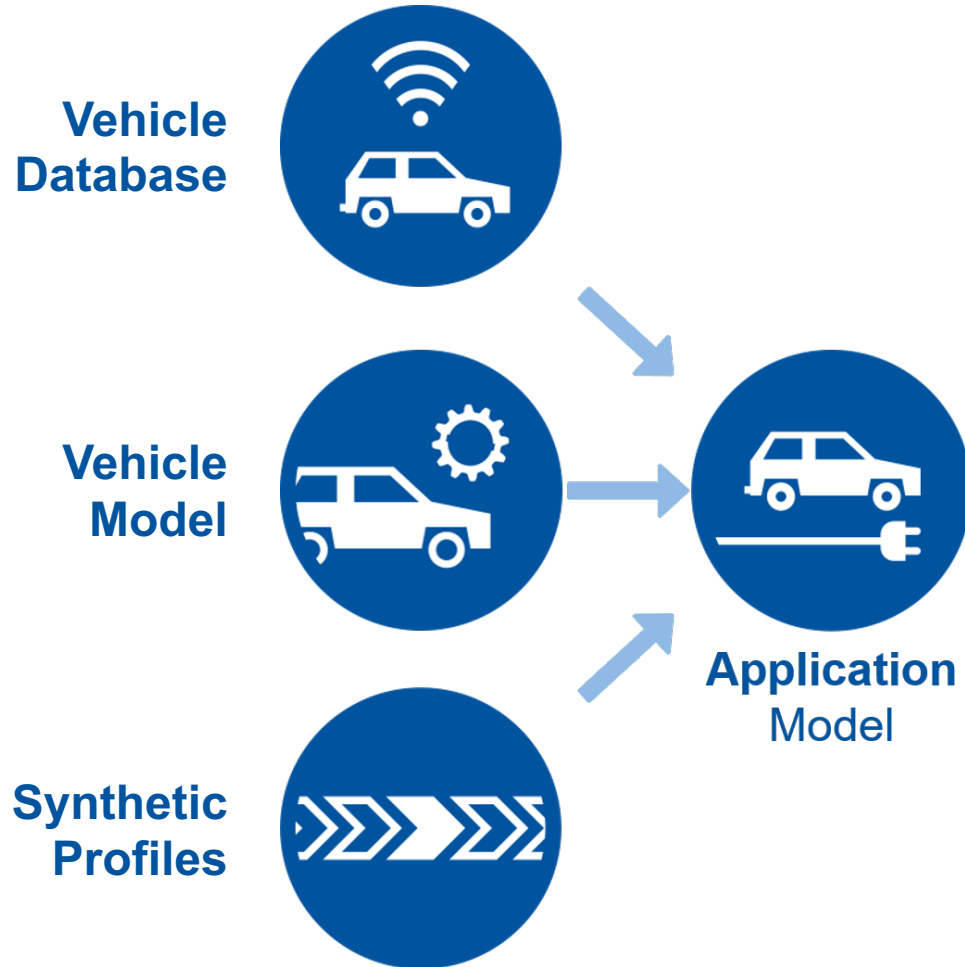
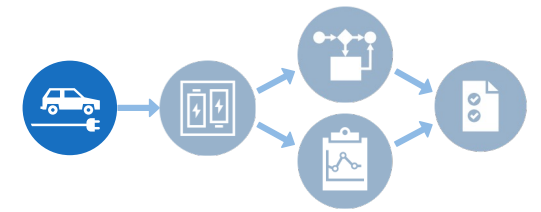


2.25 MWh
~10 000 Cells
~ 20°C





Application Model



Database

- Trips of various ISEA cars logged and stored on a server
- Possibility to filter the trips by many options
- 24 Vehicles | >20,000 Trips | > 180,000 km | > 9,500 h

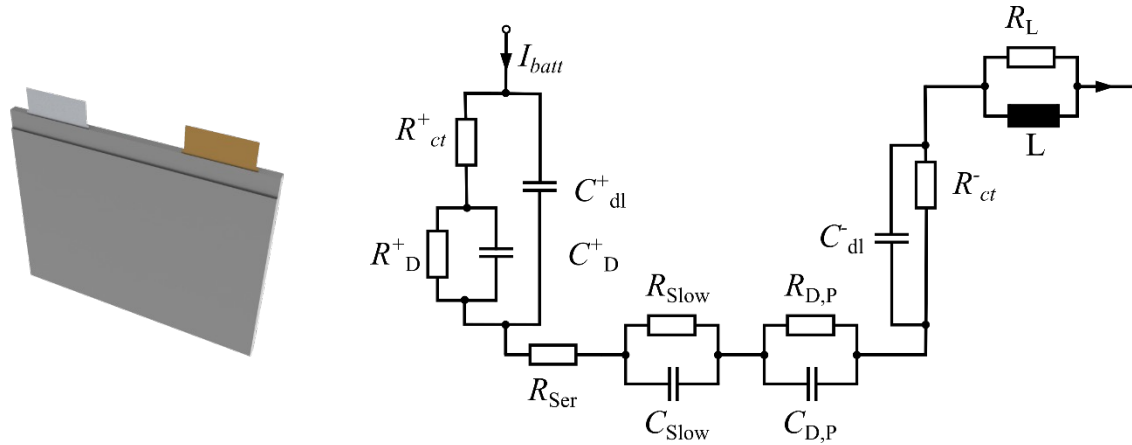
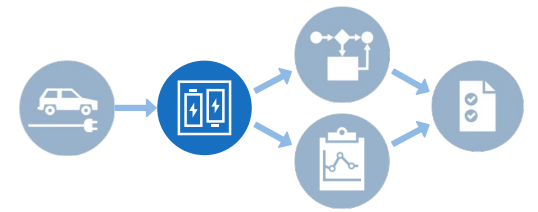
Model

- Power simulated from velocity profiles with different drivetrain topologies of electric and hybrid vehicles
- Many predefined standard velocity profiles
- Adaptable operating strategies and vehicle parameters

Synthetic

- Set of different synthetic profiles that can be scaled and repeated at different SOC levels
- Allows isolated investigation of specific effects

Battery System Model

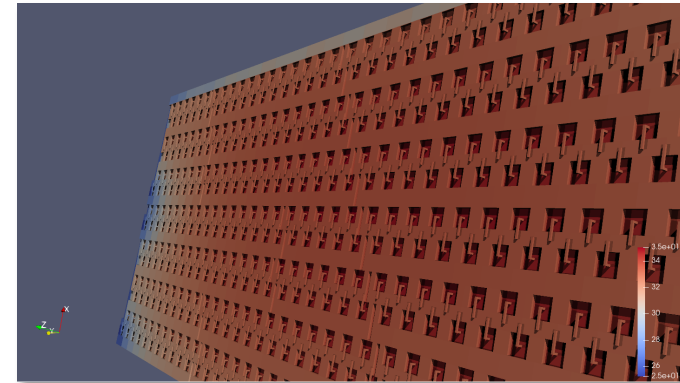
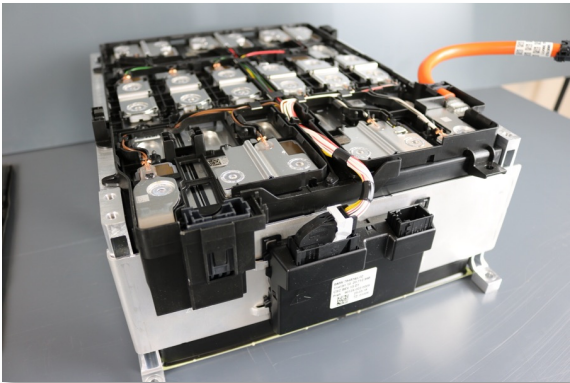


■ Cell Model

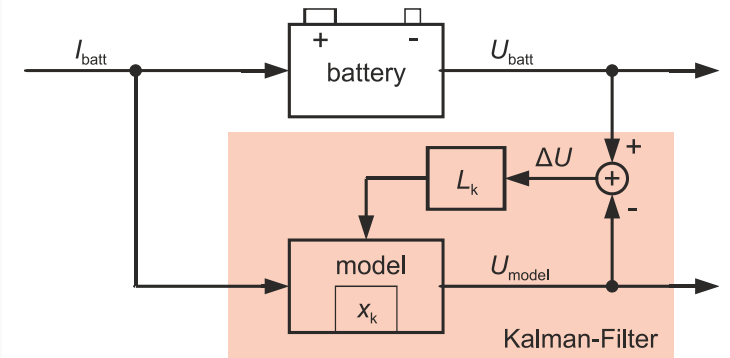
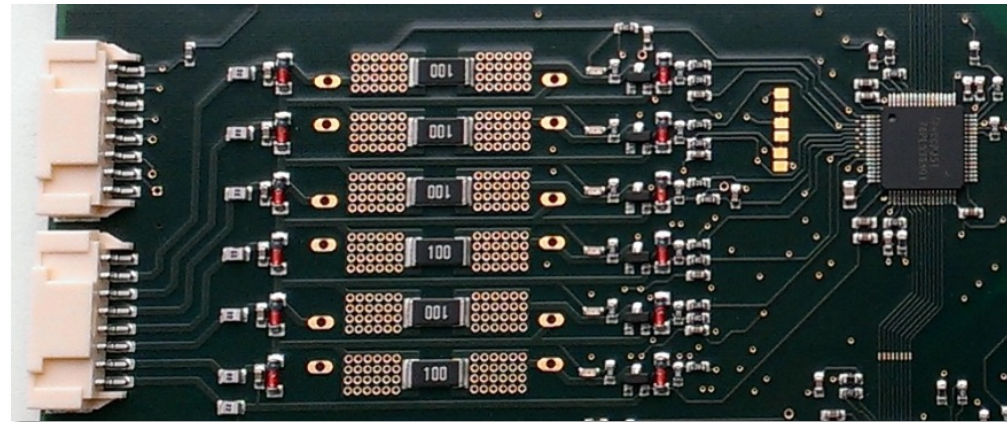
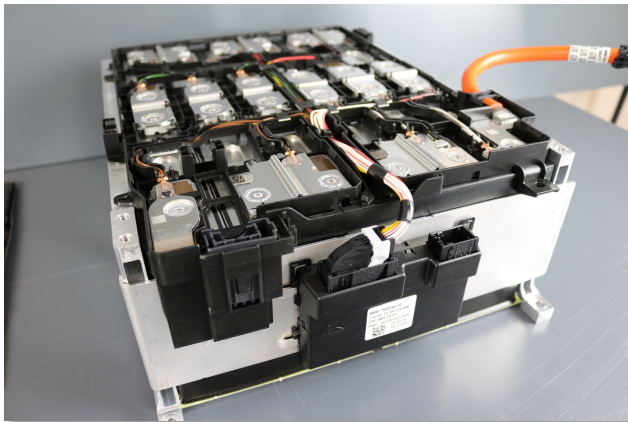
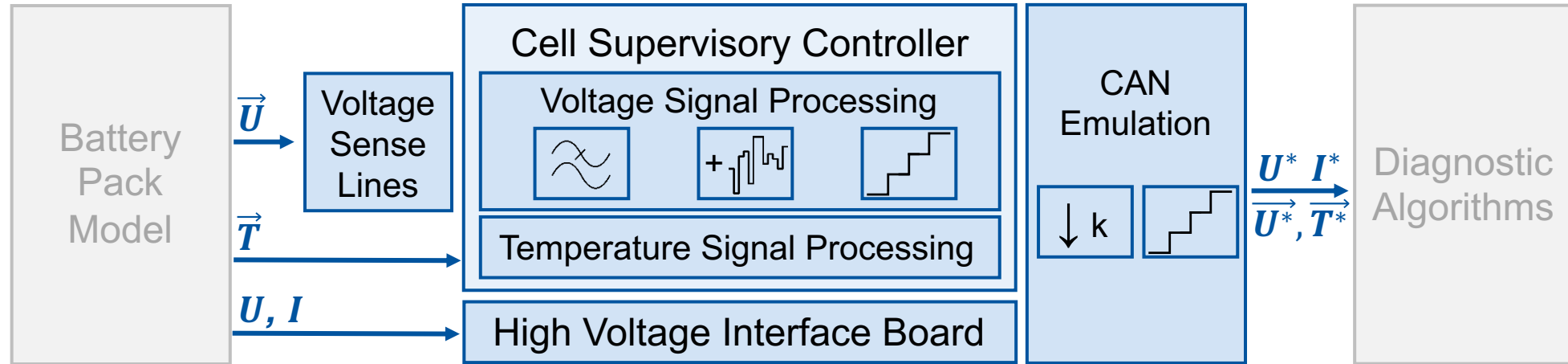
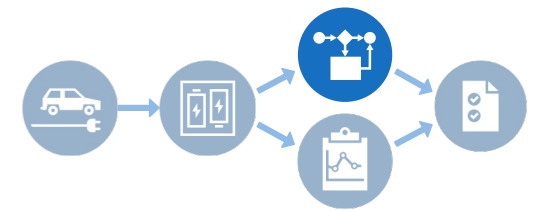
- Physically motivated equivalent circuit model

■ Pack Model

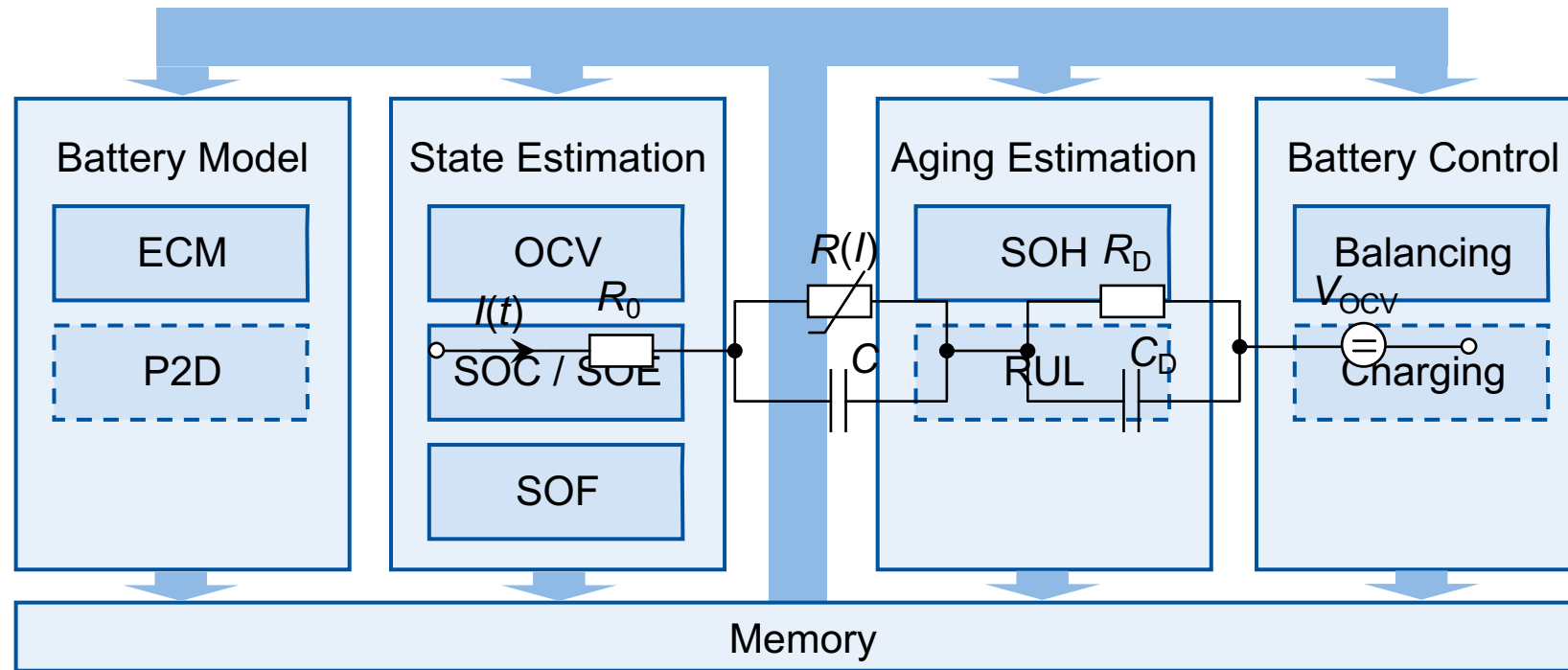
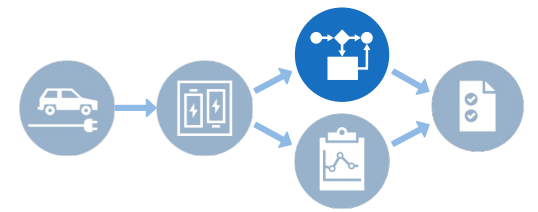
- Wiring / connection resistances
- Parameter scattering, Ageing
- Losses, Heating, Cooling

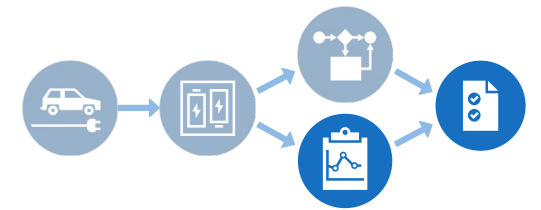


BMS Hardware Model



Modular Diagnostics Framework





BMS Model

- Estimates battery states using diagnostic algorithms
- Takes into account hardware, noise etc.
- Shows interaction of the algorithms



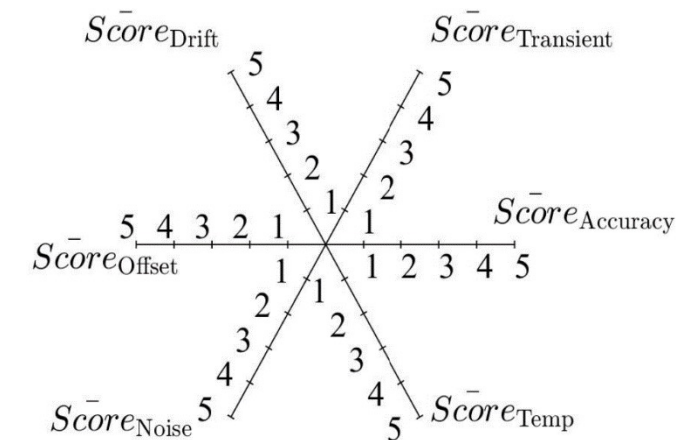
Reference State Calculation

- Takes available states directly from reference model (SOC, \underline{Z} , C)
- Calculates battery states not directly available in reference model with full resolution (SOH, SOF)



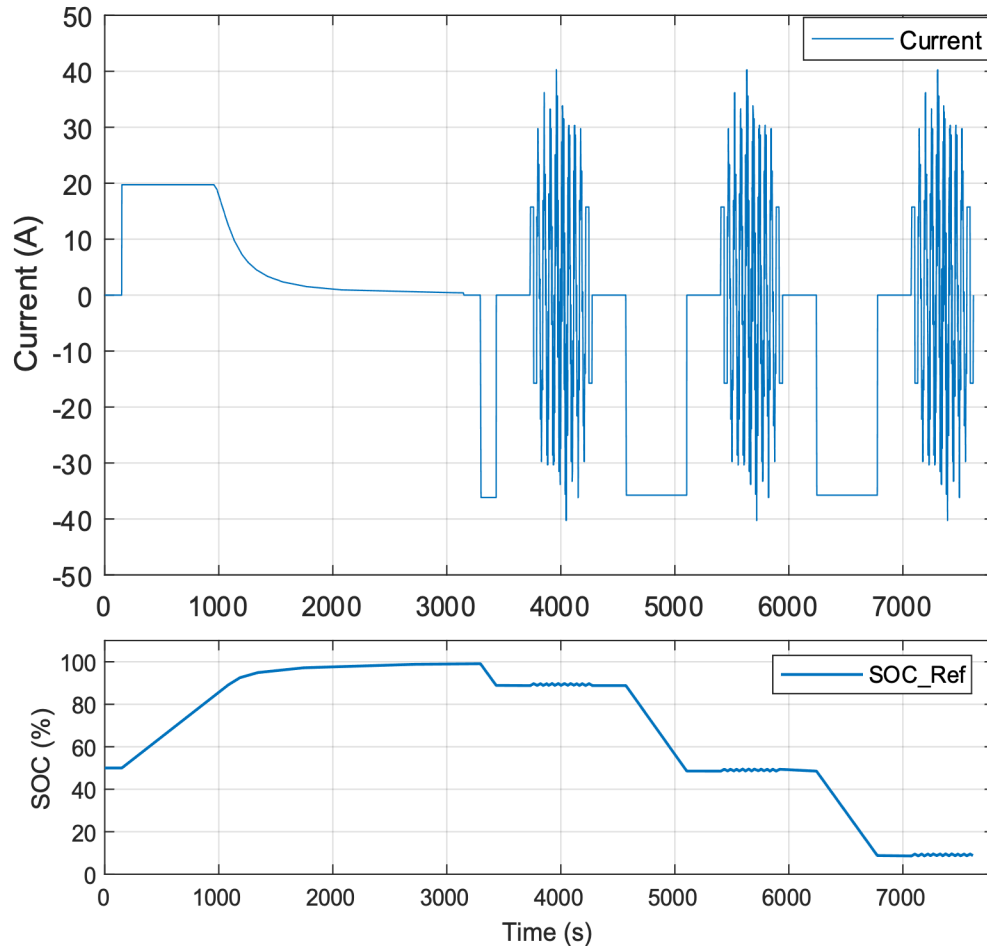
Evaluation

- Compares estimated and reference states
- Multiple simulations for analysis of e.g.
 - Drift and transient behavior
 - Offset / noise / error stability
- Optionally generates visualizations

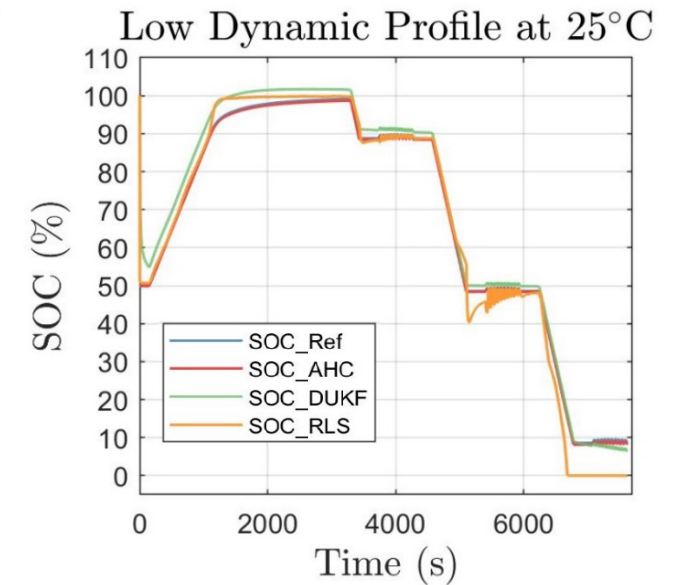
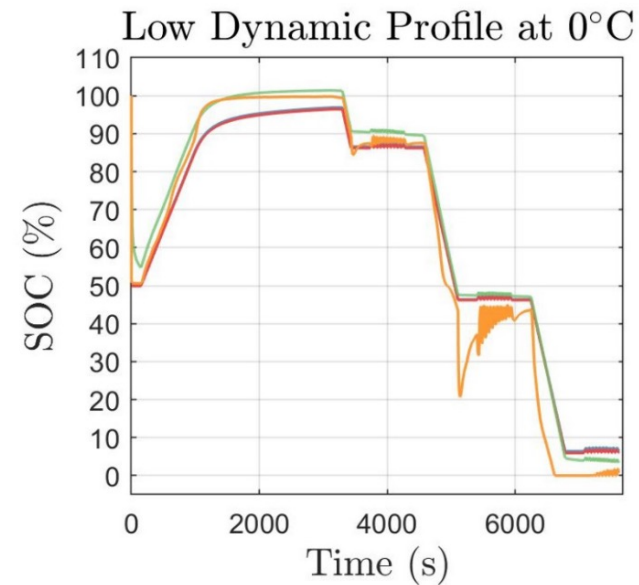


Example Results – Low Dynamic Scenario SOC Estimation

Input Profile (Low Dynamic)

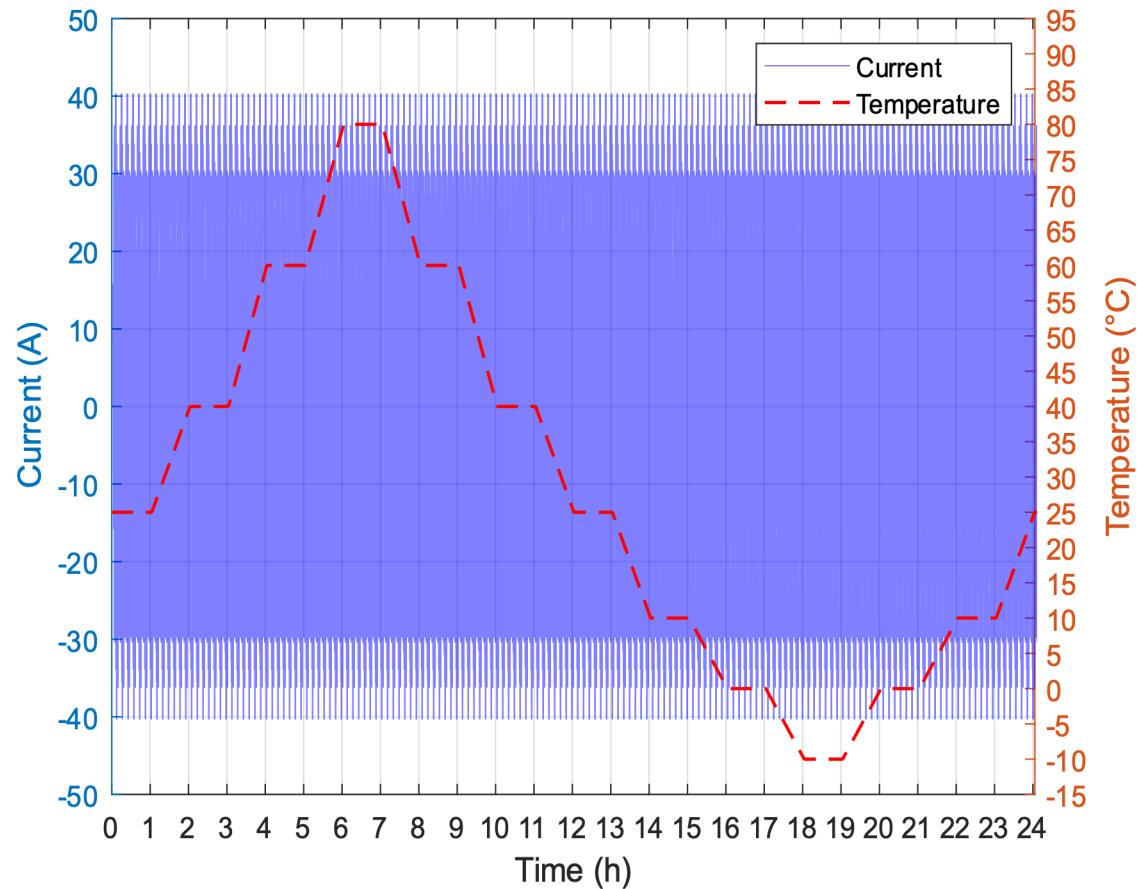


SOC Estimation Output



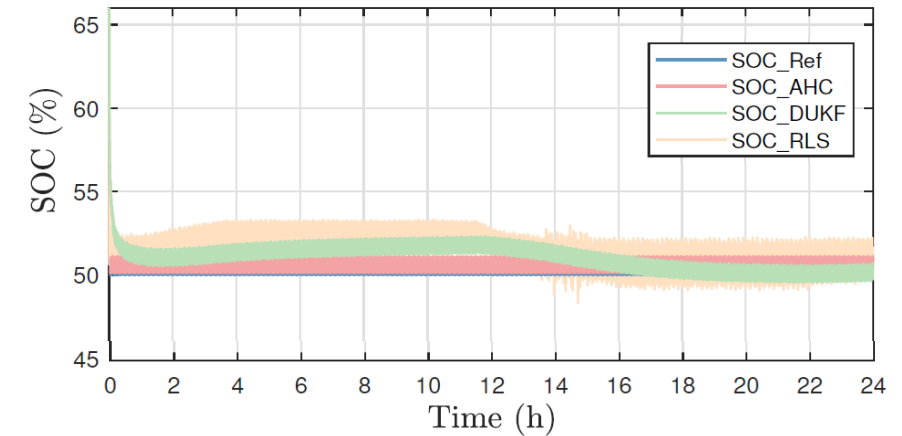
Example Results – Long Term Stability Scenario SOC Estimation

Input Profile (Long Term Stability)

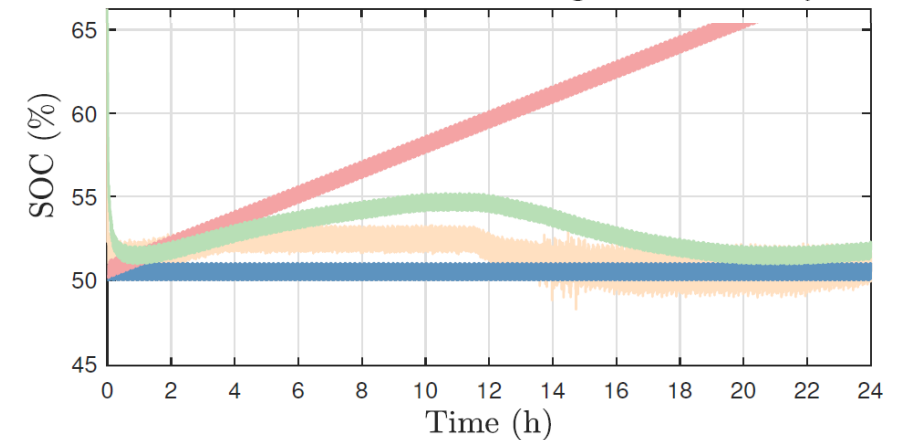


SOC Estimation Output

No Noise/Offset



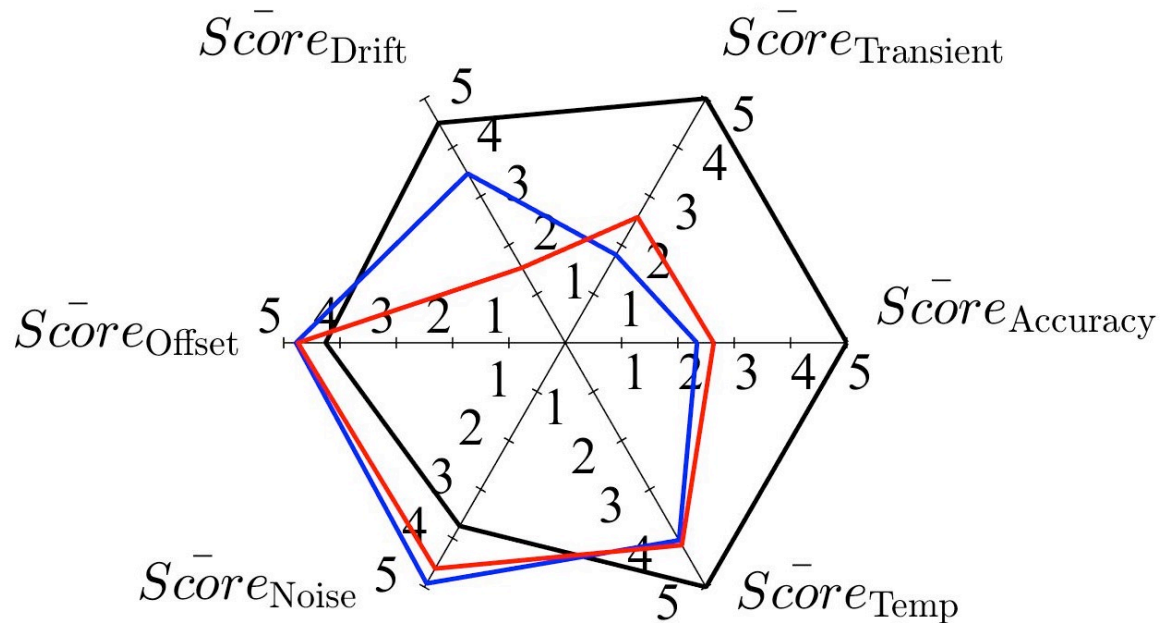
0.5% Current Sensor Offset



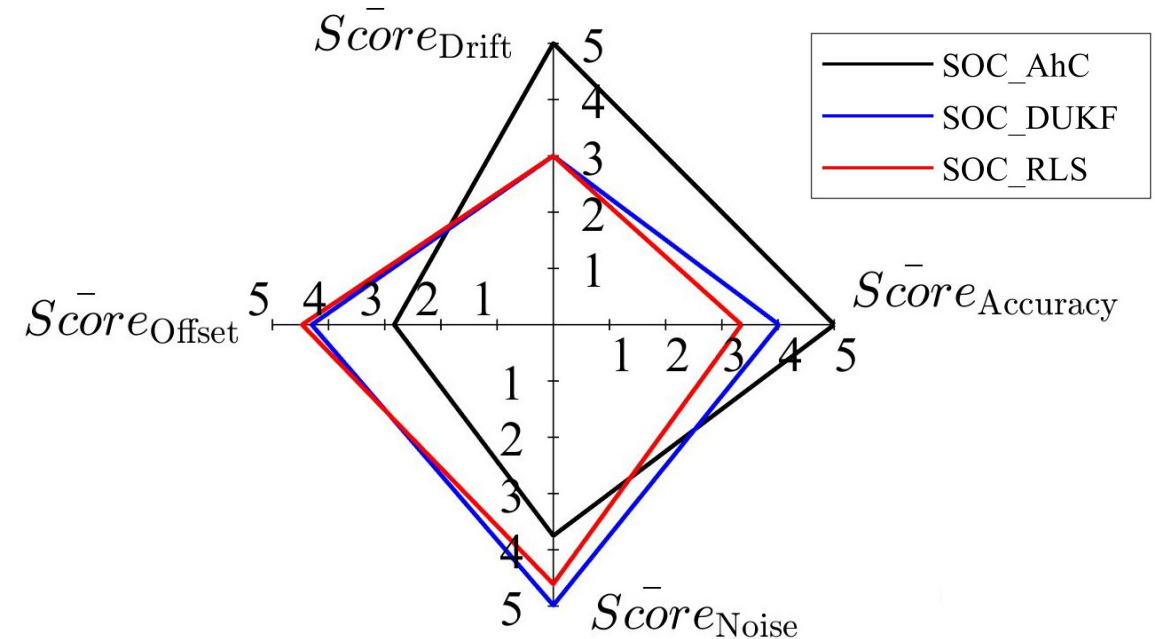
Example Results – SOC Benchmark Scores

- Investigated behavior of 3 different SOC estimation approaches
- Analyzed 224 simulations with synthetic profiles for this work (4 shown)

Low Dynamic Profile



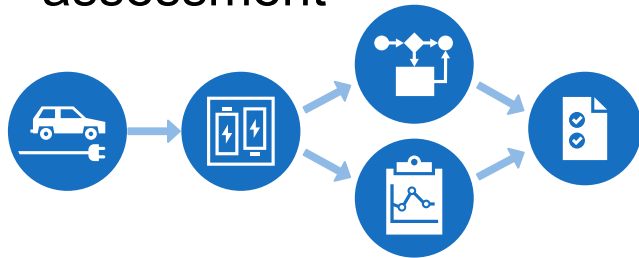
Long Term Stability Profile



Conclusion and Outlook

Toolchain

- Model-based toolchain developed
- Signal path from source to algorithm
- Evaluation of algorithm performance
- Multiple simulations for a comprehensive assessment



Possibilities

- Adapt to
 - Application
 - Battery system
 - BMS hardware
- Compare algorithm implementations
- Select algorithms for a application
- Evaluate algorithm interaction

Future Work

- Analyze different diagnostic algorithms
- Analyze further Li-Ion Chemistries
- Improve toolchain
 - Individual weighting of operation points
 - Assess computing power
 - Automation of algorithm selection

Batteries and Power Electronics at RWTH Aachen ISEA



Source: wikipedia.org

Thank you for your attention

Contact

Dominik Jöst

Tel.: +49 241 80-49396

djoest@isea.rwth-aachen.de

batteries@isea.rwth-aachen.de

Chair for Electrochemical Energy Conversion
and Storage Systems

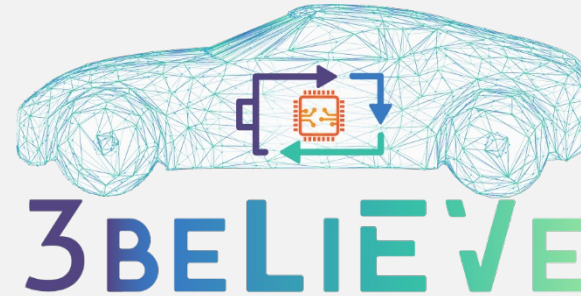
Univ.-Prof. Dr. rer. nat. Dirk Uwe Sauer
RWTH Aachen University

Jaegerstrasse 17/19
52066 Aachen
GERMANY

www.isea.rwth-aachen.de



We thank



GA 875033



EFRE.NRW

Investitionen in Wachstum
und Beschäftigung

**Hybridfahrzeuge in
physischer und virtueller
Umgebung**



EUROPEAN UNION
Investing in our Future
European Regional
Development Fund

ERDF-0800841



Battery Ageing • Battery Models • Battery Diagnostics • Battery Pack Design • Electromobility • Stationary Energy Storage • Energy System Analysis

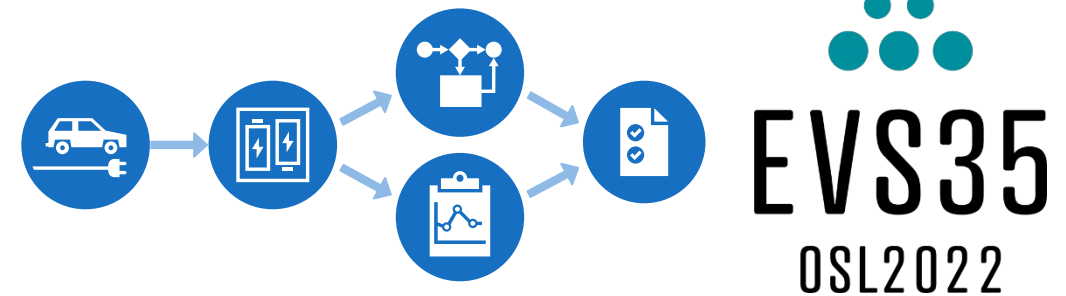
Systematic Battery State Estimation Algorithm Assessment – a Model-in-the-Loop Approach

35th International Electric Vehicle Symposium (EVS35)
Oslo, Norway

13.06.2022

Dominik Jöst

Katharina Quade, Franziska Berger, Dirk Uwe Sauer



Chair for Electrochemical Energy Conversion
and Storage Systems

ISEA
Power
Electronics
and Electrical
Drives

RWTH AACHEN
UNIVERSITY